

LALS ENGINE BOOSTER



★ ★ ★ ★ ★ Celebrating 50 Years ★ ★ ★ ★ ★
 April 2009 www.lals.org Vol. XLIV, No. IV

The Easter Bunny Makes an Appearance at Los Angeles Live Steamers Railroad Museum

LALS SRM wished all of our public riders a Happy Easter thanks to the volunteer decorating efforts of Gary Baker, Les Kovacs, Steve Altmayer, and Aaron Emmer. Saturday, the guys hung over 450 eggs from the various trees in the West End, and added additional Easter Themed props throughout the layout for the special holiday! Photos By Danni Smith



Member Calendar

- Mar. 06 BOD meeting
- Mar. 18 Work Day
- Mar. 19 Small Scale Sunday

Public Service Calendar

- Mar. 05 Sunday Public Rides
- Mar. 12 Sunday Public Rides
- Mar. 19 Sunday Public Rides
 Disney Barn open
 Steam Plant open
- Mar. 26 Sunday Public Rides

Spring Meet Information

Please see the extra page insert for all of the information concerning the 2009 Spring Meet. We need everyone's help with this, so please read the insert and volunteer to help. This is your Spring Meet, and we would like to see as many trains, families, and friends that each member can bring to enjoy the great three days of the Spring Meet.

Remember, this is your club, come out and support it!

In This Issue

Easter Pictures	1
Splinters from the Board	2
Subway Proposal	3
Upcoming Events	4
President's Message	5
Superintendent Message	5
Small Scale Note	5
Engineers & Conductors	6

Splinters From The Board

By John Friend

April 6, 2009 BOD Meeting

Meeting called to order at 7:05 PM by President Sam Calderwood. All the Board members were present except Roger Bacon and Michael Murphy. 13 general members signed in.

Secretary's Report: March's minutes were approved. Party requests were approved for Fred Lack (Carolwood), 4/20/09; Paul Secord (Citroen Car Club), 4/26/09 and Michael Murphy (LAUSD), 6/17/09.

Treasurer's Report: The Treasurer's Report through March 2009 was approved. Charles Westphal noted the income brought in by Jim Baker through his hard work recycling the Museum's beverage containers. \$376 was last months haul and there are several of these checks per year. Thank you Jim!

Shed: Charles Westphal noted that Steve Harris will transfer the Shed Manager's duties over to him by April 17th. President Calderwood suggested freezing this year's Shed credit list as many members currently do not know where they stand. This was generally accepted with the possibility of those with good numbers this year being able to use them.

General Superintendent: Steve Ruatta listed the signal tower's new roof, new narrow gauge barn, enhanced lighting, plants and trees, weed spraying and general clean up as last month's accomplishments. It was discussed that new probationary members should come to the scheduled monthly 3rd Saturday workday so that they can learn the ropes and interface with the membership. Steve Altmayer suggested that the Kountry Kitchen be pressure washed prior to the Spring Meet. In general, the Museum is in good shape in getting ready for the Spring Meet.

Safety: Sam will contact fire extinguisher vendors for recharging and certification.

Old Business:

New rolling stock: \$25,000 was allocated for the purchase of six new center bench cars, three 1.5-inch cabooses and one 3.75-inch caboose. Members have offered assistance in locating materials for the reupholstery of the existing public riding cars.

1-inch rail: Chris Mahony has made a deal with the Southern California Live Steamers for some 1-inch rail and switches. The material has been relocated to the Museum.

New Public Station: Approximately \$ 3,000 of the previously allocated \$ 6,000 for the station design has been spent. \$ 5,000 additional funds were voted to allow completion of the design and engineers stamp in preparation of the City's plan check.

New Business:

Spring Meet: Plans are being finalized for the Spring Meet. We will repeat the normal meet fare: The Fabulous Esquires Big Band Saturday night after the catered dinner. A members' spaghetti dinner special at 6PM Friday night, vendors, etc. Volunteers will be appreciated for the various tasks necessary for it all to work out smoothly. David Lazarus suggested a rent-a-locomotive program at the Meet so that potential engineers can try their hand at the throttle of our 3.75-inch #8. The Board will explore how this program might work.

Riverside Live Steamers: It appears that a city road construction project has shut down RLS operations for the present. Their Spring Meet April 24-26 has been canceled.

Members' Memorial: Gary Baker has identified a half dozen passed members that need plaques installed on the Museum Members' Memorial. The plaques will be installed during a small ceremony during the Spring Meet.

Next Board Of Director's meeting is May 4th at 7 pm.

Los Angeles Live Steamers Railroad Museum Engine Booster

The *Engine Booster* is the monthly publication of the Los Angeles Live Steamers Railroad Museum, a non-profit 501(c)(3) organization. Museum/track are located in Griffith Park, 5202 Zoo Dr., Los Angeles, CA. Mailing address: PO Box 2156 Toluca Lake, CA 91610.

The *Engine Booster* is edited and composed by Christopher Mahony and is produced on a Mac using Microsoft® Publisher 2000 software. Articles and photos are always welcomed, although the right is reserved to edit all copy. Deadline is the 20th of the month prior to publication. Input can be dropped into the "Booster" mailbox in the UP caboose, mailed, e-mailed or faxed as follows:

Christopher Mahony, 17842 Hiawatha St. Granada Hills, CA 91344
E-mail: booster@lals.org Fax: 818-677-5602

Los Angeles Live Steamers Railroad Museum Board of Directors 2008

President
Vice President
Secretary
Treasurer



Directors

Sam Calderwood
Gary Baker
John Friend
Charles Westphal

Steve Altmayer
Roger Bacon
Dave Holman
Michael Murphy

New Subway Line Proposed!

LALS Member Chuck Roast revealed that a new subway will be built under the current layout in the West End. "The public will leave New Sherwood Station, then after the bridal path tunnel, plunge underground for the ride of their lives. All by electricity of course" Mr. Roast also said that plans are in the works to connect the Zoo and Travel Town with the subway. Stay tuned.....



Train Mountain Southbound Ramble 2009

June 21-28 Sunday to Sunday or earlier

Train Mountain, Chiloquin, OR, www.trainmountain.org

June 28 Sunday: PM leave Train Mountain travel to Medford, OR

Arrive Southern Oregon Live Steamers, www.livesteaming.com/clubs/club_pages/sols.html

Camping available on the club grounds

June 29 Monday: Run the rails at Southern Oregon Live Steamers

June 30 Tuesday: Travel day to Sacramento, CA

Camping available at Sacramento Valley Live Steamers, Rancho Cordova

July 1 Wednesday: California State Railroad Museum, Sacramento www.csrmf.org

July 2 Thursday: Sacramento Valley Live Steamers, Rancho Cordova www.svls.org

July 3 Friday: AM: Golden Gate Live Steamers, www.ggls.org & tour Redwood Valley RR

PM: Travel to Arroyo Grande, CA

July 4 Saturday: Bitter Creek and Western RR www.bittercreekwesternrr.org

July 5 Sunday: Travel day arrive PM Los Angeles Live Steamers, www.lals.org

Camping available on the club grounds.

July 6 Monday: Run the rails at Los Angeles Live Steamers

July 7 Tuesday: AM: Travel to Costa Mesa, CA for Orange County Model Engineers, www.ocmetrains.org

Camping only by permit, special arrangement needed

July 8 Wednesday: Run steam only at Riverside Live Steamers, www.steamonly.org

July 9 Thursday: Travel day to Phoenix, AZ

July 10 Friday: Maricopa Live Steamers, www.maricopalivesteamers.com

Anyone interested in participating should call:

Ramble Master:

Mel Bresee - member Los Angeles Live Steamers and Orange Co. Model Engineers

mabii@aol.com (310) 553-2039

Up Coming Events That Need Your Help!

May 9th: **Children's Hospital Run**
 What is needed: Trains, Engineers, Conductors, and Volunteers to assist the guests.
 Contact Mel Bresse at:
mabii@aol.com or (310) 553-2039

May 22-25: **LALS Spring Meet**
 What is needed: You, and your trains. We would like to see the stuff that have not been out for a while, both in 1 inch scale as well as 1.5 inch.
 Contact Gary Baker at:
showdevelopment@msn.com or (323) 666-7279

June 06th: **City of Hope Run**
 What is needed: Trains, Engineers, Conductors and volunteers to assist the guests.
 Contact Dan O'Brien at:
livesteamerdan@aol.com or (714) 531-2253

Sept. 12th: **Webb-Stutson Run** (Tentative)
 More information will be forthcoming on this event.

Oct. 02-05: **Fall Meet**
 More information will be forthcoming on this event.

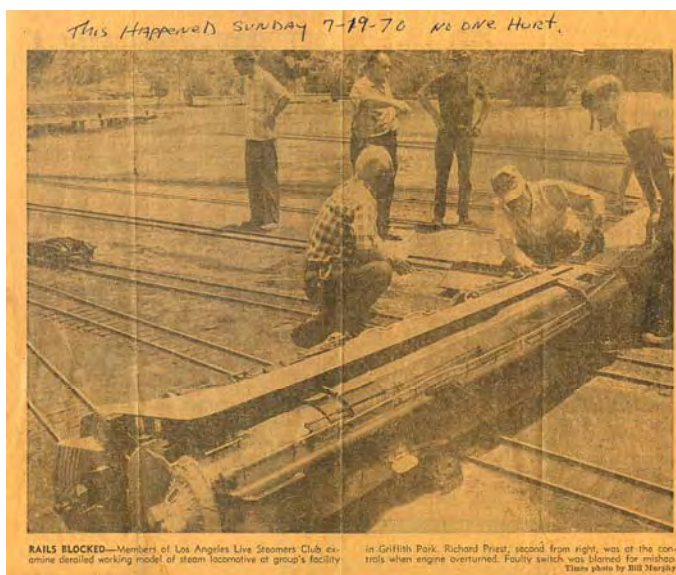
Oct. 16-18, 23-25 & 28-31: **Halloween Runs**
 What is needed: Help with the set up of the displays in September/October, Trains, Engineers, Conductors and volunteers to help the guests. Kountry Kitchen dinners on all of the nights, and then after the runs, help with removal of the displays.

Contact either Roger Bacon at 323-864-0254 or Gary Baker at: showdevelopment@msn.com or (323) 666-7279 if you would like to help.

Dec 12: **Holiday Party & Officer Installation**
 What is needed: Assistance with the planning of this event. Contact Shira Bush at 818-209-1863

If you have any events that need help, please send the information to:

Booster@lals.org



The caption says: "Rails Blocked—Members of the Los Angeles Live Steamers examine derailed working model of steam locomotive at group's facility in Griffith Park. Richard Preist, second from right, was at the controls when engine overturned. Faulty switch was blamed for mishap" LA Times photo by Bill Murphy. Photocopy by Steve Flanders

Where is this GS-4 today? It would be great if it returned to LALS at the 2009 Spring Meet.

Where is it?

The Jack Sessums 1" 4-10-2 locomotive mentioned last month is now located with the Sessums family in Orange County. It would be great to have any of Jack's equipment come to the Spring Meet for our members to view. His equipment was and still is some of the finest one inch scale equipment ever built, and should be shown to the younger members of the club, so they would get ideas, and appreciate what a top modeler can do.

Odds and Ends

If you have never seen the fine 2 inch-per-foot scale (1/6 full-size) version of a 50-ton steam powered crane built by Jerry Brown, then you need to go to this website:

<http://www.craftsmanshipmuseum.com/JBrown.htm>

It is a great story, with photos on how Jerry designed and built this fantastic working model. If we are lucky, Jerry would bring it to the Spring Meet this year. Lets hope so.

It is that time of year.....

As the weather warms, rattlesnakes are coming out in the Southern California area to hunt for food. They are here in Griffith Park also. Please keep a sharp eye open for rattlesnakes as you are working at the club. Do not put your hands in rock piles, lumber piles or deep brush without looking around the area. Remember, baby rattlesnakes do not have a rattle yet, nor the control of when to attack or not. If you see a rattlesnake, please do not touch it. In most cases they will leave on their own.



From the Superintendent:

By Steve Ruatta

One thing I've noticed is that on many regular Saturdays, we have more people working around the club than we do on a "work Saturday"! Saturday also when we have things like boiler testing, engineer, conductor and other classes and when some members come out to work on their engines or other personal projects. Most of us work during the week and Sunday's tend to revolve around the public, so Saturday is when you will see a lot of action.

I know that raking leaves is not the most exciting thing in the world to many folks. For those of you that are interested in building and laying track, there are some good sized track projects going on right now. You might want to volunteer to help.

In February and March, a concerted effort was made to spray the weeds a couple of times. We had some patches of poison oak that are looking pretty dead now – just a reminder to be careful when walking around – we have poison oak, snakes, skunks, coyotes and deer in this natural park – another reason why kids need to be supervised on the museum grounds.

The Spring Meet is next month. We need lots of folks to help get the Museum ship-shape.

Happy Steaming!



President's Message

By Sam Calderwood

Hi to ALL

We had a short meeting this last month. Some of the things that we talked about were setting aside funds for new cabooses to finish off our car sets, and setting aside funds to have our new station's plans drawn up so we can start working on that.

We had several party requests that were approved.

The big thing that we talk about is the up and coming Spring Meet. We can use help in all areas. Number one will be our grounds clean-up. Please contact Steve Ruatta, and he can tell you where he needs help. For the most part he and his crew have been doing an outstanding job of cleaning up the place. Remember that there is only 4 weeks until the meet.

Two members of the LALSRLM/Rossdorfer Eienbahn Club from Germany, Wolfgang Hell and his friend Rosie, will be here until the end of April. There will be a potluck in their honor after our public runs on April 26. Details are posted in the kitchen

Well wishes to Patty Miller who is recovering from a fall. She will be back soon.

Sam

Apologies

Please except my sincere apologies on the lateness of the April Booster. This was caused by illness in my family, and a new computer program that was installed. Look for a short Booster in May at the usual mid month printing. Christopher Mahony, Editor

Attention Small Scales!

By Christopher Mahony

John De Rosa & I are inviting all Small Scale locomotives, and all rolling stock to the Spring Meet! We would like to see as many of the equipment that is currently sitting in your garage, storage shed of boxes, running or not. The new Steam Plant Junction yard will be complete, with 4 new storage tracks for trains.

Remember, we are the only small scale track in Southern California, so come out and run!!

Who's Been Working on the RR

S. Rutta (x 4)
 T. & G. Berg
 L. Soibelman (x3)
 M. Soibelman (x3)
 G. Becker (x3)
 T. Akins (x3)
 C. & T. Metts (x2)

Please try to come out and help with the maintenance of the club. It is up to all members, to keep it clean.

Training Classes

Conductor: Want to learn to be a conductor? Call Collin Westphal at 818-846-2385 or Steve Harris at 818/842-2296 to schedule a class. There is an excellent DVD available to either borrow or own (\$5).

Classes are scheduled only when a person wants to become a conductor.

The test will then be scheduled for the third Saturday of the month. Note: You must have completed both your Level II and Level I safety training to attend this class.

Diesel Engineer: Want to learn to operate the Museum's diesel/electric locomotives? Call Mike Murphy at 213-247-0776 to schedule a class. The diesel class typically meets on a Saturday with the check ride on the following Sunday. Note: You must have completed all your conductor requirements to attend this class.

Safety: 3rd Saturday of the month. Level II (private use) class at 10AM. This is a half-hour class with a multiple-choice test.

Level I (public operations) class at 11AM. This is an hour class with a multiple-choice test. (Level II is the

Engineers and Conductors February 2009

<u>Date/Passengers</u>	<u>Engineer</u>	<u>Conductor</u>	<u>Owner</u>
Feb 01/526	P. Fuad C. Solak G. Baker G. Baker	B. Quinn C. Westphal B. Smith M. Bruce	Fuad LALS Steam LALS Santa Fe LALS Santa Fe
	Track Inspectors: R. Tanjany Safety Coordinator: R. Tanjany Station Master: J. De Phillips Sr. Station Assistants: R. Secara		
Feb 08	Rained Out		
Feb 15/622	P. Fuad G. Baker G. Heiman	B. Quinn K. Casey R. Secara	Fuad Baker LALS Santa Fe
	Track Inspectors: W. Fengler Safety Coordinator: W. Fengler Station Master: B. Kaufman Station Assistants: L. Mitchell		
Feb 22/659	T. Morris C. Westphal F. O'Donnell P. Fuad	P. Fowler L. Ross A. O'Donnell B. Quinn	Morris LALS Santa Fe LALS Fuad
	Track Inspectors: J. De Phillips Sr. Safety Coordinator: C. Mohr Station Master: B. Kaufman Station Assistant: R. Secara,		
1, 807	Total for the month of January		
4, 800	Total for the year		

Come out and pull the public if your equipment is qualified. It is a great way to get shed credit, and we would like to see some new equipment out on the line.

