

LALS ENGINE BOOSTER



★ ★ ★ ★ ★ Celebrating 50 Years ★ ★ ★ ★ ★
 March 2009 www.lals.org Vol. XLIV, No. III

A New Retaining Wall



Along the Disney Loop, a new retaining wall of concrete was constructed to replace the original railroad tie constructed wall that was built in the 1960's. The original wall looked fine on the outside of the ties, but Mother Nature had different ideas on the inside, rotting the wood. Even Union Pacific replaces ties with concrete now.



A new lighted staircase to the Mountain Division is part of the construction. Thanks to Roger Bacon and his crew for the fine work done.

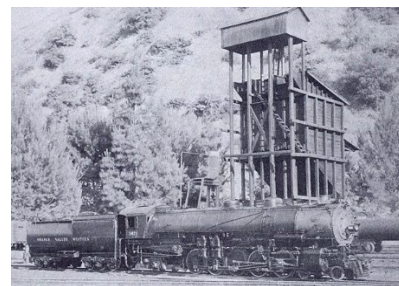
Member Calendar

- Mar. 02 BOD meeting
- Mar. 15 Small Scale Sunday
- Mar. 21 Work Day & Member Meeting.

Public Service Calendar

- Mar. 01 Sunday Public Rides
- Mar. 08 Sunday Public Rides
- Mar. 15 Sunday Public Rides
 Disney Barn open
 Steam Plant open
- Mar. 22 Sunday Public Rides
- Mar. 29 Sunday Public Rides

Where is it?



Jack Sessums 1" 4-10-2 at the Cooper Yard coaling tower from the photo archives. Where is the locomotive now, and what became of the coaling tower? Send the answer to the Booster.

In This Issue

New Wall	1
Splinters from the Board	2 & 3
President's Message	3
Superintendent Message	3
Engineers & Conductors	4
For Sale/Wanted	5
Train Mountain Ramble	5
Upcoming Events	6
Special Lunch	6
A Special Lady	6

Splinters From The Board

By John Friend

March 2, 2009 BOD Meeting

Meeting called to order at 7:00 PM by President Sam Calderwood. All the Board members were present. 21 general members signed in.

Secretary's Report: February's minutes were approved. Party requests were approved for Ronald Nelson, 4/4/09; Phillip Tucker, 5/2/09; Gary Baker, 5/9/09; Mel Bresee 6/20/09; Brad Bluth, 6/27/09; Bill Barbe (for Carolwood Foundation, Disney Barn 10th Anniversary), 7/18/09; and Silvia Munoz, 9/26/09.

Treasurer's Report: The Treasurer's Report through February 2009 was approved. The Museum's finances are in good shape and some non-allocated funds are available for various projects if needed. Charles presented a chart showing that 65 percent of our gross revenues are from the donations of the general public. The Museum's tax return is due 3/15/09.

Membership: Steve Harris has an application for resident member Martha Figueroa of Rosemead and her son Garibalde. A junior member application has been received for David Flores of Downey (a sponsor will be required for David). There currently are 404 members: 204 resident, 103 non-resident, 8 low income, 12 junior, 3 charter, 12 honorary, 34 special and 28 probationary. Alex O'Donnell asked for and received a waiver of his probationary hours due to previous work performed for the Museum.

Shed: Steve Harris reports that all leases are currently paid up to date. Steve will be transferring shed manager duties to Charles Westphal.

General Superintendent: Steve Ruatta thanked members for coming out and working at the Museum. Much has been accomplished such as the new retaining

wall, landscaping in the mountain division and the space heaters in the kitchen area. The Museum lighting is also being attended to. The BOD thanked Steve for his efforts. Willie Wilhelm asked for assistance in painting the stationary plant.

Facilities: Roger Bacon noted that the new retaining wall, sprinklers and electrical are in. An FCR request to provide electrical service to the Ollie Johnson Station was approved (work to be done by the Carolwood group). Nothing has been heard from Rec and Parks regarding the Museum's new station. Roger will pulse them on the matter.

Safety: Wolf Fengler noted that our fire extinguishers need recharging and certification.

Old Business: David Lazarus is developing the signal bridge circuitry and mechanism. The signal bridges themselves are being adapted to fit into the available space.

New Business: Chris Mahony is negotiating with the Southern California Live Steamers for the purchase of some of their surplus 1" track and switches.

The Museum was offered an opportunity to purchase a 3.75-inch caboos. The Board feels that standard gauge cabooses are needed more urgently and has tabled purchase of the larger caboos for now.

Gary Baker will look into updating the Museum members' memorial.

Parties: President Calderwood noted that party hosts must stay with their parties while their guests are present at the Museum the general public. Please remember that they are our guests.

Weight limits: The Board would like to point out that the 350 pound weight limit for riding the trains applies to

(Continued on page 5)

Los Angeles Live Steamers Railroad Museum Engine Booster

The *Engine Booster* is the monthly publication of the Los Angeles Live Steamers Railroad Museum, a non-profit 501(c)(3) organization. Museum/tracks are located in Griffith Park, 5202 Zoo Dr., Los Angeles, CA. Mailing address: PO Box 2156 Toluca Lake, CA 91610.

The *Engine Booster* is edited and composed by Christopher Mahony and is produced on a Mac using Microsoft® Publisher 2000 software. Articles and photos are always welcomed, although the right is reserved to edit all copy. Deadline is the 20th of the month prior to publication. Input can be dropped into the "Booster" mailbox in the UP caboos, mailed, e-mailed or faxed as follows:

Christopher Mahony, 17842 Hiawatha St. Granada Hills, CA 91344
E-mail: booster@lals.org Fax: 818-677-5602

Los Angeles Live Steamers Railroad Museum Board of Directors 2008

President
Vice President
Secretary
Treasurer

Directors



Sam Calderwood
Gary Baker
John Friend
Charles Westphal

Steve Altmayer
Roger Bacon
Dave Holman
Michael Murphy

Phone 323/661-8958

For Sale:

- 1) RRSC 4-4-0 frame assembly and driver castings. Frame is assembled. Four driver's are rough castings only. Includes prints. Asking \$400.00 for frame and \$100.00 for driver castings or \$450.00 if you take both.
- 2) 3 3/4 scale engine kit. Same design as the club's new steamer, but these parts came from Keith Watson in Australia. Engine can be built as a 2-4-0, 2-4-2 or 2-4-4. Includes all castings with main side frames and cylinders machined. All other parts are rough castings including castings to make Stephenson valve gear if desired. Drawings included. Asking \$4000.00

Also, there is a boiler for this engine. Stainless Steel with copper tubes. Asking \$2000.00. Willing to deal if buyer takes parts and boiler.

Bill Barbe
wdbarbe@yahoo.com 818-325-9227

Train Mountain Southbound Ramble 2009

June 21-28 Sunday to Sunday or earlier

Train Mountain, Chiloquin, OR, www.trainmountain.org

June 28 Sunday: PM leave Train Mountain travel to Medford, OR

Arrive Southern Oregon Live Steamers, www.livesteaming.com/clubs/club_pages/sols.html

Camping available on the club grounds

June 29 Monday: Run the rails at Southern Oregon Live Steamers

June 30 Tuesday: Travel day to Sacramento, CA

Camping available at Sacramento Valley Live Steamers, Rancho Cordova

July 1 Wednesday: California State Railroad Museum, Sacramento www.csrnf.org

July 2 Thursday: Sacramento Valley Live Steamers, Rancho Cordova www.svls.org

July 3 Friday: AM: Golden Gate Live Steamers, www.ggls.org & tour Redwood Valley RR

PM: Travel to Arroyo Grande, CA

July 4 Saturday: Bitter Creek and Western RR www.bittercreekwesternrr.org

July 5 Sunday: Travel day arrive PM Los Angeles Live Steamers, www.lals.org

Camping available on the club grounds.

July 6 Monday: Run the rails at Los Angeles Live Steamers

July 7 Tuesday: AM Travel to Costa Mesa, CA for Orange County Model Engineers, www.ocmetrains.org

Camping only by permit, special arrangement needed

July 8 Wednesday: Run steam only at Riverside Live Steamers, www.steamonly.org

July 9 Thursday: Travel day to Phoenix, AZ

July 10 Friday: Maricopa Live Steamers, www.maricopalivesteamers.com

Anyone interested in participating should call:

Ramble Master:

Mel Bresee - member Los Angeles Live Steamers and Orange Co. Model Engineers

mabii@aol.com (310) 553-2039

Up Coming Events That Need Your Help!

May 9th: **Children's Hospital Run**
 What is needed: Trains, Engineers, Conductors, and Volunteers to assist the guests.
 Contact Mel Bresse at:
mabii@aol.com or (310) 553-2039

May 22-25: **LALS Spring Meet**
 What is needed: You, and your trains. We would like to see the stuff that have not been out for a while, both in 1 inch scale as well as 1.5 inch.
 Contact Gary Baker at:
showdevelopment@msn.com or (323) 666-7279

June 06th: **City of Hope Run**
 What is needed: Trains, Engineers, Conductors and volunteers to assist the guests.
 Contact Dan O'Brien at:
livesteamerdan@aol.com or (714) 531-2253

Sept. 12th: **Webb-Stutson Run** (Tentative)
 More information will be forthcoming on this event.

Oct. 02-05: **Fall Meet**
 More information will be forthcoming on this event.

Oct. 16-18, 23-25 & 28-31: **Halloween Runs**
 What is needed: Help with the set up of the displays in September/October, Trains, Engineers, Conductors and volunteers to help the guests. Kountry Kitchen dinners on all of the nights, and then after the runs, help with removal of the displays.

Contact either Roger Bacon at 323-864-0254 or Gary Baker at: showdevelopment@msn.com or (323) 666-7279 if you would like to help.

Dec 12: **Holiday Party & Officer Installation**
 What is needed: Assistance with the planning of this event. Contact Shira Bush at 818-209-1863

If you have any events that need help, please send the information to:

Booster@lals.org

Passing of a Fine Lady



It is with deep sadness that we inform the LALS membership that Jean Fowler, the wife of Peter Fowler of 56 years has passed away on February 18, 2009

I'm sure we will all want to keep Peter in our thoughts and prayers. I loved talking to Jean when she was at the club usually manning the exit gates for the riders on Sundays. She was so cute, very soft spoken and witty in a kind of little English grandmother way. I always complemented her on how nice she looked in her little pink hat! We will all miss her!

Gary

March Gourmet Lunch

By Roger Bacon

Every third Sunday, the Kountry Kitchen will feature a different gourmet lunch. This month, it is Mystery Lunch month. What will it be? Snadwiches, steak, chicken? Come on down on the 15th, and find out. Only Roger knows for sure.....

Plus the usual Kountry Kitchen favorites of hamburger, hot dogs, chili, chips and drinks.

If you have an idea for a lunch, mention it to Roger Bacon

Odds and Ends...

1. The 2009 LALS SRM Calendar is included in this Booster. Please read it to know what is coming up in the next year.
2. The one inch scale track crew would appreciate that you do not walk or stand on the rails of the small gauge tracks. It is made out of aluminum and will bend.
3. If you have a train that has not been out for a long time, come run it. It is very cool to see some of the fantastic trains in the barns running.

(Splinters Continued)

LALSRLM members as well as the general public. Members exceeding the weight limit will not be permitted to ride for safety reasons. Overweight probationary members will be accommodated in the performance of their service hours by doing other work.

Parking: The Board noted that double parking is not permitted at the facility at any time and that parking along the hillside of Crystal Springs Drive is not permitted as it is a fire lane.

Station personnel are expected to be courteous at all times in dealing with. Please remember that they are our guests.

Meeting Adjourned at 8:25 PM.

Next Board of Directors meeting will on April 6th at 7p.m.

From the Superintendent:

By Steve Ruatta

For all you new members, last month I mentioned a mysterious notebook by the microphone. This isn't my idea – but a good one from one of the previous supers. In the patio area west of the UP caboose is a microphone and some gate controls for the service gate. Below this is a notebook and some museum rosters. Inside the notebook is least one page of things that need to be done around the museum and pages for you to write your name for days that you work.

On our workday in February, we had a good group of people working around the museum after our members meeting at 9am. After a couple of hours of work, it was pizza for lunch! Thanks Sam! In January, we started the "Annual West End Cleanup" and in February, we made another big dent in the leaves and weeds. This is just one of those projects that you just have to keep after: Then little by little – pretty soon it's done.

A lot of people help to make our museum a better place – in fact, everyone contributes something in their own way. Come and see some of the big projects that have been completed recently. Find out who did them and thank the folks responsible for their help.

And speaking of help, our Town of Minden is looking for a sign painter to freshen things up. If you are the artistic type and want to help, give me a call. If you know who created this town years ago, I would be happy to document it.

The Spring Meet is in a couple of months. If you can help out to get the Museum ship-shape, that would be great!

Happy railroading!

President's Message

By Sam Calderwood

Hi to ALL

Well, those of you who didn't come missed a great short meeting and you should have been there.

We all got to see the new retaining wall with it's lighted steps. This is a great safety feature for going up to the mountain division at night. No more sliding up and down the hill.

We talked about buying a 3" caboose to go with our new steam engine but the board decided to pass and buy two 1 1/2" cabooses to go with the 6 cars that we have now. I hope that someday soon that we will get a caboose to go with the engine.

Charles Westphal will be taking over the train shed time this month. Please give him time to get his feet wet before you tie him to the rails.

We will be filming a television segment here this month on the third Sunday. Please come out and watch.

The General Superintendent could still use your help on the work days. The Spring Meet is only 2 months away and last month, after the stirring G.M. meeting, we all worked and had pizza for lunch. What will we do this month??? Come and see.

Speaking of the Spring Meet, we could use your help. This is always fun and it would be a good time to get your name up in lights. Please let one of the board members know how you would like to help.

I did not want to have to do this, but due to our insurance, the club members have to meet the same requirements as the public. This is a safety issue so those who are under 34", expecting, or over 350 lbs. will not be able to ride our trains. You can, however, still run your own with no problems.

When you sign up for a party you have to be there the entire time to make sure that club rules are followed and the area cleaned up and the trash cans are emptied. If you are not there for the party then the party will be canceled for that day and all will have to leave that are not members.

Please note that parties will not be approved for the hours that we are pulling the public. You may schedule a party on Sundays before 11 o'clock AM or after 3 o'clock PM.

Sam

Who's Been Working on the RR

S. Rutta (x 4)
 T. & G. Berg
 L. Soibelman (x3)
 M. Soibelman (x3)
 G. Becker (x3)
 T. Akins (x3)
 C. & T. Metts (x2)

Please try to come out and help with the maintenance of the club. It is up to all members, to keep it clean.

Engineers and Conductors

December 2008

<u>Date/Passengers</u>	<u>Engineer</u>	<u>Conductor</u>	<u>Owner</u>
Jan 04/646	P. Fuad B. Harris M. Breese B. Crone M. Murphy C. Westphal	B. Quinn F. O'Donnell M. Bruce B. Lieberman C. Westphal R. Secara	Fuad Harris Breese LALS PA LALS Steam LALS Santa Fe
	Track Inspectors: R. Tanjany Safety Coordinator: R. Tanjany Station Master: J. De Phillips Sr. Station Assistants: R. Secara, J. De Phillips Jr.		

Training Classes

Conductor: Want to learn to be a conductor? Call Collin Westphal at 818-846-2385 or Steve Harris at 818/842-2296 to schedule a class. There is an excellent DVD available to either borrow or own (\$5).

Classes are scheduled only when a person wants to become a conductor.

The test will then be scheduled for the third Saturday of the month. Note: You must have completed both your Level II and Level I safety training to attend this class.

Diesel Engineer: Want to learn to operate the Museum's diesel/electric locomotives? Call Mike Murphy at 213-247-0776 to schedule a class. The diesel class typically meets on a Saturday with the check ride on the following Sunday. Note: You must have completed all your conductor requirements to attend this class.

Safety: 3rd Saturday of the month. Level II (private use) class at 10AM. This is a half-hour class with a multiple-choice test.

Level I (public operations) class at 11AM. This is an hour class with a multiple-choice test. (Level II is the prerequisite for this class.) Station Master/Safety Coordinator class at 1PM. This is an hour hand-on class.

Jan 11/800	C. Mohr T. Morris R. Hawkins S. Calderwood M. Murphy B. Crone C. Mohr	R. Secara P. Fowler D. Valencia W. Fengler C. Westphal B. Lieberman R. Secara	Mohr Morris Hawkins Calderwood Murphy LALS PA LALS Santa Fe
	Track Inspectors: R. Tanjany Safety Coordinator: R. Tanjany Station Master: C. Westphal Station Assistants: B. Quinn, P. Shaffer		

Jan 18/919	B. harris G. Baker P. Fuad F. O'Donnell	P. Fowler M. Bruce B. Quinn G. Becker	Harris Baker LALS PA LALS Santa Fe
	Track Inspectors: R. Tanjany Safety Coordinator: R. Tanjany Station Master: L. Mitchel Station Assistants: R. Secara		

Jan 25/628	S. Calderwood G. Baker A. Held M. Murphy P. Fuad	W. Fengler K. Casey A. O'Donnell C. Westphal B. Quinn	Calderwood Baker LALS PA LALS Steam LALS PA
	Track Inspectors: C. Westphal, C. Mohr Safety Coordinator: C. Mohr Station Master: J. De Phillip Sr. Station Assistant: R. Secara, H. Bruce		

2, 993 Total for the month of January
 2, 993 Total for the year





2009 Calendar of Events

January

01/03 **Change Directions**
 01/04 **Shed Changeovers**
 01/04 Public Rides
 01/05 BOD Meeting
 01/11 Public Rides
 01/17 Work Day/ Member Meeting
 01/18 Public Rides/Disney Barn/Steam Plant
 Small Scale Sunday/Gourmet Lunch
 01/25 Public Rides

February

02/01 **Membership Renewals Due**
 02/01 Public Rides
 02/02 BOD Meeting
 02/09 Public Rides
 02/15 Public Rides/Disney Barn/Steam Plant
 Small Scale Sunday/Gourmet Lunch
 02/21 Work Day/ Member Meeting

March

03/01 Public Rides
 03/02 BOD Meeting
 03/08 Public Rides /**Time Change**
 03/15 Public Rides/Disney Barn/Steam Plant
 Small Scale Sunday/Gourmet Lunch
 03/21 Work Day/ Member Meeting
 03/22 Public Rides
 03/29 Public Rides

April

04/05 Public Rides
 04/06 BOD Meeting
 04/12 Public Rides Easter Day
 04/18 Work Day/ Member Meeting
 04/19 Public Rides/Disney Barn/Steam Plant
 Small Scale Sunday/Gourmet Lunch
 04/26 Public Rides

May

05/02 **Change Directions**
 05/03 Public Rides
 05/04 BOD Meeting
 05/09 **Children's Hospital Run**
 05/10 Public Rides
 05/16 Work Day/Member Meeting
 05/17 Public Rides/Disney Barn/Steam Plant
 Small Scale Sunday/Gourmet Lunch
 05/22-25 **Spring Meet**
 05/31 Public Rides

June

06/01 BOD Meeting
 06/06 **City of Hope Run**
 06/07 Public Rides
 06/14 Public Rides
 06/20 Work Day/ Member Meeting
 06/21 Public Rides/Disney Barn/Steam Plant
 Small Scale Sunday/Gourmet Lunch
 06/27 **Pot Luck/ Night Run/Disney Barn
 Movie night**
 06/28 Public Rides

July

07/05 Public Rides
 07/5-6 **Train Mountain Ramble visit LALS**
 07/06 BOD Meeting
 07/12 Public Rides
 07/18 Work Day/Member Meeting
 07/19 Public Rides/Disney Barn/Steam Plant
 Small Scale Sunday/Gourmet Lunch
 07/25 **Pot Luck/Night Run/Disney Barn
 Movie Night**
 07/26 Public Rides

August

08/02 Public Rides
 08/03 BOD Meeting
 08/08 **TTOS Run**
 08/09 Public Rides
 08/15 Work Day/Member Meeting
 08/16 Public Rides/Disney Barn/Steam Plant
 Small Scale Sunday/Gourmet Lunch
 08/22 **Pot Luck/Night Run/Disney Barn
 Movie Night**
 08/23 Public Rides
 08/29 **Change Directions**

September

09/06 Public Rides
 09/12 **Webb-Stutson Run (Tentative)**
 09/13 Public Rides
 09/14 BOD Meeting (Due to Labor Day)
 09/19 Work Day/Member Meeting
 09/20 Public Rides/Disney Barn/Steam Plant
 Small Scale Sunday/Gourmet Lunch
 09/26 **Pot Luck/Night Run**
 09/27 Public Rides
 09/30 **End Shed Year**

October

10/01 **Begin Shed Year**
 10/02-04 **Fall Meet**
 10/05 BOD Meeting
 10/11 Public Rides
 10/17 Work Day/Member Meeting
 10/16-18 **Public Night Halloween Runs**
 10/18 Public Rides/Disney Barn/Steam Plant
 Small Scale Sunday/Gourmet Lunch
 10/23-25 **Public Night Halloween Runs**
 10/25 Public Rides
 10/28-31 **Public Night Halloween Runs**

November

11/01 **Time Change**
 11/01 Public Rides /**Club Halloween Party**
 11/02 BOD Meeting
 11/08 Public Rides
 11/15 Public Rides/Disney Barn/Steam Plant
 Small Scale Sunday/Gourmet Lunch
 11/21 Work Day/**Annual Member Meeting
 Election**
 11/22 Public Rides
 11/29 Public Rides

December

12/06 Public Rides
 12/07 BOD Meeting
 12/12 **Holiday Party & Officer Installation**
 12/13 Public Rides
 12/19 Work Day/Member Meeting
 12/20 Public Rides/Disney Barn/Steam Plant
 Small Scale Sunday/Gourmet Lunch
 12/27 Public Rides