

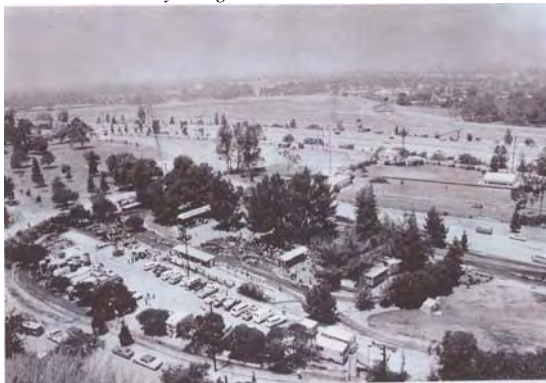
LALS ENGINE BOOSTER



★ ★ ★ ★ ★ Celebrating 50 Years ★ ★ ★ ★ ★
 February 2009 www.lals.org Vol. XLIV, No. II

Some Early History Of LALS

By Douglas Alkire



Are you interested in how things were done in the early days of LALS? If so, read on.....

I was elected to the first Board of Directors in 1965, and served as a Director for 6 full terms from 1965 to 1986, and attended all Board meetings as Chairman of the Facility Planning Committee for 20 of those years. This Allowed me to have a pretty good idea of what was going on in the club.

In those early days the membership dues were our only real source of income, and the money allocated for expansion of the facility were only about \$200 per year. We had to do a lot of scrounging for materials that we could not afford to buy.

In 1964, Walt Disney gave 1500 feet of trackage from his home railroad, after it had all been pulled up, plus all of the wood from the high bridge, to LALS. We used the rails and wood to start the Disney Loop around the south border of the parking lot. The Disney Loop trackage was laid on a horse trail which Parks and Recreation Department had abandoned at the same time, and relocated to the West side of the LALS facility.

We needed chain link fencing along the entire Southern part of the new trackage to keep the public off of the track, and a pedestrian overpass to allow the public into the Sutchville Station by way of a fenced walkway.

The chain link fencing came from a Hollywood dog kennel, which was being removed to make way for a new building. More chain link fencing and posts came from an abandoned plant nursery, which had been purchased by LALS member Francis Moseley as the site for his new Servo Products factory. Mr. Moseley saved the cost of hiring someone to remove the fence, and we got the materials we could not afford to buy.

(Continued on page 3)

Member Calendar

- Feb. 02 BOD meeting
- Feb. 14 Work Day & Member Meeting.
- Feb. 15 Small Scale Sunday

Public Service Calendar

- Feb. 01 Sunday Public Rides
- Feb. 08 Sunday Public Rides
- Feb. 15 Sunday Public Rides
Disney Barn open
Steam Plant open
- Feb. 22 Sunday Public Rides

Guess Who?

That handsome devil riding behind Jim Kreider in the 1970's is LALS's own David Lazarus. Love the shades!!!! (Locomotive is not bad either)



In This Issue

| | |
|--------------------------|---|
| LALS Early Years | 1 |
| Splinters from the Board | 2 |
| President's Message | 3 |
| Superintendent Message | 3 |
| Special Lunch | 3 |
| Engineers & Conductors | 4 |

Splinters From The Board

By John Friend

February 2, 2009 BOD Meeting

Meeting called to order at 7:04 PM by President Sam Calderwood. All the Board members were present except Steve Altmayer and David Holman. 19 general members signed in.

Secretary's Report: January minutes were approved. A party was approved for Steve Harris, 6/13/09. A letter was received from the St Louis Live Steamers requesting information regarding our insurance policy.

Treasurer's Report: The Treasurer's Report through January 2009 was approved. Treasurer Westphal presented the 2009 budget based on last years results and current input. The budget was approved.

Membership: Steve Harris introduced four Junior members: Oskar Frye sponsored by his father Bruce, Kyle Casey sponsored by his father Michael, Alex O'Donnell sponsored by his father Frank and Pietro Ruggiero sponsored by his father Pedro. There currently are 400 members: 202 resident, 103 non-resident, 9 low income, 11 junior, 3 charter, 12 honorary, 32 special and 28 probationary.

Parties on Sundays during public run time were discussed. The BOD will in the future only approve these before or after the normal public run times on Sundays.

General Superintendent: Steve Ruatta indicated that lots got done by approximately 30 members on the regular workday and that the week after was also a beneficial day. Trenching for the Kountry Kitchen space heaters is in progress so please be careful. The Museum lighting is being checked to be ready for the Spring Meet.

Facilities: Roger Bacon noted that the replacement

concrete retaining walls are well underway and that necessary modifications to some plumbing is being done. The center tunnel is locked for the duration of the project and please observe slow orders on the Mountain Division. Michael Casey introduced an FCR for a demonstration HO layout to be located between the Disney Barn and the Museum office caboose.

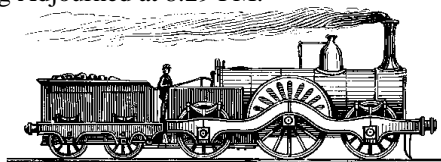
Safety: Wolf Fengler has repaired the locking lugs on the transfer table; there was very little engagement when locked up. The 3100 boiler jacket is receiving attention. The "Big #8" (the 3.75 inch Museum steamer) will receive a firebox peephole to better observe the fire. The training to run the #8 is going fine with several members becoming qualified. The Museum is checking with the Riverside Live Steamers for their steam training procedures. David Lazarus suggests that persons interested in running #8 spend some time on the Museum's stationary boiler to get a feel for these larger boilers.

Old Business: The Museum has received a quotation for parts kits to produce more center bench cars from Real Trains. Bids for material to reupholster the existing cars have also been received.

New Business: Peter Fowler has had to resign from conductor training due to personal reasons. Collin Westphal is being approached to replace Peter after his birthday makes him legal age for the position. New safety stickers for 2009 will need to be designed and produced.

Announcements: Pat Miller is out of the hospital and in assisted living for rehab after falling and breaking her hip.

Meeting Adjourned at 8:29 PM.



Los Angeles Live Steamers Railroad Museum Engine Booster

The *Engine Booster* is the monthly publication of the Los Angeles Live Steamers Railroad Museum, a non-profit 501(c)(3) organization. Museum/track are located in Griffith Park, 5202 Zoo Dr., Los Angeles, CA. Mailing address: PO Box 2156 Toluca Lake, CA 91610.

The *Engine Booster* is edited and composed by Christopher Mahony and is produced on a Mac using Microsoft® Publisher 2000 software. Articles and photos are always welcomed, although the right is reserved to edit all copy. Deadline is the 20th of the month prior to publication. Input can be dropped into the "Booster" mailbox in the UP caboose, mailed, e-mailed or faxed as follows:

Christopher Mahony, 17842 Hiawatha St. Granada Hills, CA 91344
E-mail: booster@lals.org Fax: 818-677-5602

Los Angeles Live Steamers Railroad Museum Board of Directors 2008

President
Vice President
Secretary
Treasurer

Directors



Sam Calderwood
Gary Baker
John Friend
Charles Westphal

Steve Altmayer
Roger Bacon
Dave Holman
Michael Murphy

Phone 323/661-8958

(Early Years continued)

The club could not afford to hire outside contractors to do any kind of work, so all of the construction was done by LALS members. Fred Hertwig, the Superintendent of Travel Town, and a friend of the club, gave use permission to take any material that was in the Travel Town scrap pile that we could use. Full size railroad ties for retaining walls in various parts of our facility, and all of the wood for the Disney Loop overpass came from that source, as well as straight sections of old 8 pound steel mining rail which was used for the 15 foot transfer bridge track used for the first group of parallel steaming bays. The bays made it possible to host the Brotherhood of Live Steamers (BLS) and International Brotherhood of Live Steamers (IBLS) meets every 5 years through 1995, since no other club had the capacity to do so in those years. Los Angeles Live Steamers was the pioneer.

This is only a small part of how LALS grew in those early years, and I hope that it will be interesting reading for our newer members.

From the Superintendent:

By Steve Ruatta

February 2009

As I said last month, our regularly scheduled work day each month is the 3rd Saturday of each month right after the general meeting at 9am. This is a good time to find out what's going on, meet other members and get a few hours of work done. If you can't make it at that time, there is a list of projects in the notebook by the microphone for you "self-starters". Anytime you can show up for a few hours – Great!

On the work day in January, the museum was a very busy place! We had lots of people working at the west end, where we made a big dent in the leaves and took down the last of the Halloween decorations. The track crew was busy as well – working to realign some track to install a new switch. Thanks to everyone who showed up to help make the museum a little bit better! Don't forget to write your name in the notebook for the "Who's Been Workin' on the RR" section of this fine publication.

I know there is nothing so frustrating as to show up to work and find that the tool you want to use won't run or isn't maintained. If there is a problem with tools, leave a note for me in the superintendent's mailbox inside the UP caboose.

Hope to see you soon!

President's Message

By Sam Calderwood

We had a great meeting last Monday. Ginny Berg gave us an update on Pat Miller and she is doing well. It will still be a week or two till she can come back and play trains with us.

Peter Fowler had to step down as our conductor trainer. I would like to thank him for doing such a great job in the past. I think that we have found someone to take his place, I am just waiting for him to say yes then I can tell you who it is.

Boy there sure are a lot of things happening at the club. If you have not been there for a while you need to come by and see all of the neat stuff being done. Steve Ruatta and all of the members that have been coming out to help have been doing quite the job. You should come out and help. He is starting to get ready for the spring meet, and yes it takes this long to get ready. If you come out on the work weekend, 3rd Saturday of each month, sit and listen to me talk at the general meeting and then stay to work, now get this, we will feed you. Is that a great deal or what??

Roger Bacon is moving right along with the construction of a new concrete retaining wall along the Disney Loop. The Disney Tunnel is closed for now, so please do not use that track.

The new steam engine is a big hit with the people who come to ride our trains. If you would like to be part of this team and learn how to run it, talk to Mike Murphy. You must do a Saturday training day before you can pull the public. Also you must have run the diesel locomotives before you can run this.

That is all I have at this time so come down and have some fun with the rest of us.

Sam

February Gourmet Lunch

By Roger Bacon

Every third Sunday, the Kountry Kitchen will feature a different gourmet lunch. This month, come down on February 15th and dine on the following:

Philly Cheese Steak Sandwiches, Baked Potatoes, with all the fixings, Salad, Dessert and a drink, all for \$6.00.

Plus the usual Kountry Kitchen favorites of hamburger, hot dogs, chili, chips and drinks.

If you have an idea for a lunch, mention it to Roger Bacon

Who's Been Working on the RR

S. Rutta (x 4)
 T. & G. Berg
 L. Soibelman (x3)
 M. Soibelman (x3)
 G. Becker (x3)
 T. Akins (x3)
 C. & T. Metts (x2)

Please try to come out and help with the maintenance of the club. It is up to all members, to keep it clean.

Engineers and Conductors

December 2008

| <u>Date/Passengers</u> | <u>Engineer</u> | <u>Conductor</u> | <u>Owner</u> |
|--|---|---|---|
| Dec 07/434 | P. Fuad T. Morris M. Breeze B. Kaufman | B. Quinn P. Fowler R. Nelson J. Bass | Quinn T. Morris Breeze Kaufman |
| Track Inspectors: C. Mohr Safety Coordinator: C. Mohr Station Master: R. Tanjany Station Assistants: R. Secara, G. Becker | | | |

| | | | |
|--|----------------------|------------------------|----------------|
| Dec 14/422 | B. Harris P. Fuad | G. Becker R. Secara | Harris Fuad |
| Track Inspectors: R. Tanjany Safety Coordinator: R. Tanjany Station Master: C. Westphal Station Assistants: L. Mitchel, C. Westphal | | | |

| | | | |
|--|---|---|--|
| Dec 21/613 | P. Fuad T. Morris M. Murphy M. Murphy C. Westphal | B. Quinn P. Fowler C. Westphal C. Westphal B. Liebman | Fuad Morris Murphy Westphal LALS |
| Track Inspectors: R. Tanjany Safety Coordinator: R. Tanjany Station Master: J. De Phillip Sr. Station Assistants: G. Becker | | | |

| | | | |
|---|---|--|--------------------------------------|
| Dec 28/757 | S. Calderwood T. Morris B. Crone G. Heiman | W. Fengler P. Fowler R. Woolley R. Secara | Calderwood Morris LALS LALS |
| Track Inspectors: R. Tanjany Safety Coordinator: R. Tanjany Station Master: J. De Phillip Sr. Station Assistant: R. Secara | | | |

2, 226 Total for the month of December
 43, 712 Total for the year

Training Classes

Conductor: Want to learn to be a conductor? Call Collin Westphal at 818-846-2385 or Steve Harris at 818/842-2296 to schedule a class. There is an excellent DVD available to either borrow or own (\$5).

Classes are scheduled only when a person wants to become a conductor.

The test will then be scheduled for the third Saturday of the month.
 Note: You must have completed both your Level II and Level I safety training to attend this class.

Diesel Engineer: Want to learn to operate the Museum's diesel/electric locomotives? Call Mike Murphy at 213-247-0776 to schedule a class. The diesel class typically meets on a Saturday with the check ride on the following Sunday. Note: You must have completed all your conductor requirements to attend this class.

Safety: 3rd Saturday of the month. Level II (private use) class at 10AM. This is a half-hour class with a multiple-choice test.

Level I (public operations) class at 11AM. This is an hour class with a multiple-choice test. (Level II is the prerequisite for this class.) Station Master/Safety Coordinator class at 1PM. This is an hour hand-on class.

