

# LALS ENGINE BOOSTER



★ ★ ★ ★ ★ Celebrating 50 Years ★ ★ ★ ★ ★

March 2007

www.lals.org

Vol. XLII, No. III

## Center Bench Car Braking System

By Willie Wilhelm



The Museum's center bench cars have automatic air brakes. This system will apply the brakes if the main line is opened for any reason, such as rupture of the main brake line or opening a brake control valve. All of the metal Museum cabooses have an air tank that is filled from the compressor at New Sherwood Station. This source of air can be used to supply brake air if your locomotive does not have an onboard air source. The station compressor is to be used to fill the caboose tank rather than the main air supply at various places along the station track. The ground is cooler than the air coming into it causing some of the water in the air to condense out. Water in the brake system will cause corrosion, particularly in the air tank. There is very little water in the station compressor hose. This brake arrangement can be used by any train with it's own air supply. Just connect to the brake line and go. The regulated brake line pressure setting will stop a powered locomotive. As the train stops, the locomotive wheels will begin to slide.

At the rear of each car, there is a "dump" valve for releasing brake pressure at the end of the run. It is located under the stainless steel hinged cover. Before starting out with a train this "dump" valve must be closed on each car.

There is a brake valve and a pressure gauge in each caboose. If the Conductor sees anything ahead on the track, or a serious passenger problem, he or she can apply the brakes. The pressure gauge is connected to the main line. If the brakes are applied, this pressure will go down to near zero.

There is a separate brake valve for the engineer. We have provided, up to now, a valve for the engineer that is Museum property. This is not the best setup. In an emergency, there may be some confusion in grabbing the valve when it is draped over the engineer's leg or has fallen to the floor, etc.

The Museum is making up a small panel with a pressure gauge, a brake valve, a hose and a coupling that will be for sale to the members. This panel is to be permanently attached to the member's car. With the pressure gauge, the engineer can monitor the condition of the brake system. The only part remaining to get is the panel that is now being made by Steve Altmayer.

## Member Calendar

|         |                            |
|---------|----------------------------|
| Feb. 24 | Work Day<br>Member Meeting |
| Mar. 05 | BOD Meeting                |
| Mar. 24 | Work Day<br>Member Meeting |
| Apr. 02 | BOD Meeting                |

*Board/General Meetings begins at 7 pm.*



## Public Service Schedule

|         |  |
|---------|--|
| Feb. 25 | Public Rides   |
| Mar. 11 | Public Rides   |
| Mar. 18 | Public Rides<br>Disney Barn Open<br>Steam Plant Open |
| Mar. 25 | Public Rides   |
| Apr. 01 | Public Rides   |



## In This Issue

|                                      |   |
|--------------------------------------|---|
| Disneyland Railroad Appreciation Day | 3 |
| Engineers and Conductors             | 4 |
| General Superintendent               | 3 |
| Splinters from the Board             | 2 |
| Training Classes                     | 4 |
| Website Redesign in Progress         | 3 |
| Who's Been Workin' on the RR         | 4 |

**2007 Calendar of Events  
Included with this Issue**

## Splinters from the Board

February 5, 2007

By Peter Fuad

At the February 5, 2007 Board of Directors meeting, Steve Harris reported that the Museum now has 404 members. The Board noted generous donations from Gary Burdorf and Mary and Kent Bolerjack.

**General Superintendent's Report.** Tom Downing, general superintendent, reported that the cleanup campaign is making good progress. The painting of the Santa Fe caboose is almost complete. The O'Brien-Moore bridge will be painted next. A tree near the East Meadow was in danger of falling. (The city has subsequently cut down the tree.) A dead pine tree limb that needs removing near the steam plant was also identified. The hose bibs authorized by the Board at the last meeting had been procured but not yet installed.

**Safety.** Willie Wilhelm noted an email that he had circulated showing how other live steaming clubs around the country were dealing with safety and waiver issues. These emails will be posted.

**Facilities.** Roger Bacon reported that he would be pouring concrete to replace the platform for the Sutchville Station that had been removed during reconstruction of the yard, and the City has approved the pouring. (Plans for the New Sherwood Station will be put on hold until the Sutchville Station is completed.) The Board also voted to relocate the wigwag signal to near New Sherwood Station where it would be more visible to the public. Roger will procure an FCR for the signal installation. Roger also reported on progress and plans for the Kountry Kitchen remodel. The grill will be turned around, the latticework will be enclosed and the area generally reconfigured to increase convenience and safety. The tie stock purchased earlier has arrived.

The Museum's order for five new center bench cars was discussed. Donovan has promised the bodies by the end of February. The Board moved to arrange to paint three of the cars Pullman green and two of the cars boxcar red. The

trucks originally planned to be used on these cars will instead be diverted to replacing worn trucks on the center bench cars comprising the electric train set. The Board approved the purchase of a pair of trucks without brakes for the electric locomotive riding car, but deferred authorizing the purchase of the trucks that will now be needed for the new center bench cars because of fiscal constraints. The Board approved purchasing five new batteries and a coil for the electric locomotive, although the type and cost of the new batteries was subsequently deferred pending further research into the matter.

The Board voted to install an electric eye to count passengers boarding trains on Sundays on an experimental basis. This will include designing a shoot to funnel passengers through the electric eye in a single file. There was some discussion on the necessity of such a device given that issuing tickets already gave a fairly accurate count.

Willie announced that he had located the leak in the screw air compressor and had ordered a replacement part. Willie announced that he had completed a number of brake control panels for installation on riding cars, and the Board voted to sell such panels at cost to members, which will be about \$40.

The Board voted to spend up to \$200 to repair the copier. If it costs more, John De Phillip Jr. will consult with the Board.

Steve Harris reported that all shed space is leased. Two members leasing Phil West Barn tracks and owning steam engines took advantage of the new plan to allow them to lease a second track near the steaming bays for their steam engines. The reciprocal space they promised to make available on their Phil West Barn tracks remains open.

Steve introduced new resident members Joe Dinhaupt and Debbie Friedman and son Zachary. He announced three new nonresident members: Mike Masee (Mojave), David Dull (Escondido) and Ernie Beskowiney (Canada).

Vice president Les Kovacs presided at the Board meeting in the absence of President Ron Bergmann, who is recovering from heart bypass surgery. The Board wishes Ron a speedy recovery.

### Los Angeles Live Steamers Railroad Museum Engine Booster

The *Engine Booster* is the monthly publication of the Los Angeles Live Steamers Railroad Museum, a non-profit 501(c)(3) organization. Museum/tracks are located in Griffith Park, 5202 Zoo Dr., Los Angeles, CA. Mailing address: PO Box 2156 Toluca Lake, CA 91610.

The *Engine Booster* is edited and composed by Donald Frozina and is produced on a PC using Microsoft® Publisher 2000 software. Articles and photos are always welcomed, although the right is reserved to edit all copy. Deadline is the 20<sup>th</sup> of the month prior to publication. Input can be dropped into the "Booster" mailbox in the UP caboose, mailed, e-mailed or faxed as follows:

Donald Frozina 2132 Bend Ave. Lancaster, CA 93535  
E-mail: booster@lals.org Fax: 310/302-4111

### Los Angeles Live Steamers Railroad Museum Board of Directors 2006

**President**  
**Vice President**  
**Secretary**  
**Treasurer**

**Directors**



Ronald Bergmann  
Les Kovacs  
Peter Fuad  
John De Phillip Jr.

Wolf H. Fengler  
Tim LaGaly  
Todd Moore  
Doug Young

Phone 323/661-8958

FROM THE **General Superintendent***By Tom Downing*

The Museum's Spring-cleaning is picking up steam. We still need help on Saturdays! If you come out on Sundays and look around, you can see that on most Saturdays, many things are getting done.

The new yard is starting to look good. We temporarily moved the old west town out to Davis Mining, as it was getting beat up in the parking lot. At least it looks good on this spot for now. Larry, the painter, has put a fresh coat of paint on the Santa Fe caboose. We have got the trees trimmed back from the O'Brien-Moore Bridge and painting will begin painting on that soon. The valley line has started to get ballasted.

The weather has been good on doing the outdoor projects. One of the Saturday-regular groups finally got the 50<sup>th</sup> Anniversary sign up over the public entrance installed. Gary Baker got the sign made up and it looks really sharp.

There are still a lot of items at the Museum that still need attention. Remember the clock is ticking for the Spring Meet. The Board has asked me to get the west end cleaned up. This involves a lot of tree trimming, leaf raking, getting all the drains cleared and adjusted. This appears to be a good size job that will take a few weekends.

Now would be a great time to come out and get involved as with so many projects going on, our active volunteer based group is getting stretched pretty thin. With a little help, we can get this place looking sharp.

---

## For Sale

**Eaton #11 hydrostatic** transmission and mounting bracket for Kohler 8 HP engine, \$350.00. Contact John De Phillip Jr., 818/241-5385.

**Railroad Supply-type** industrial switcher. 1½" scale, 25 ton Chessie engine #208. Great starter engine. Excellent condition, outstanding hauler. LALS RM compliant. Proven reliability. Has a 4 HP Kohler 4-cycle motor, hydrostatic transmission, working lights, dimmable headlamp, and all wheel drive. Priced to sell, only \$3,000. Contact Diana or Glen Manchester, 626/798-7189 or 626/222-6147.

**Tank car**, \$400. 1½" scale. Contact Dick Jensen, 310/326-5850.

## Wanted

**Reverse stand** for 1½" scale steam locomotive; firebox door and frame, latch; smokebox throttle; Complete tender or tender parts suitable for light Pacific or Consolidation. Contact Jay Carsman, jcarsman@socal.rr.com or 818/727-1111.

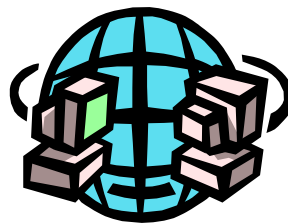
## Disneyland Railroad Appreciation Day

*By Stephen Waller*

Volunteers at the Walt Disney Barn are inviting Disneyland Railroad engineers, firemen and conductors to visit LALS RM on Sunday March 18, 2007. We're choosing that particular day because the Disneyland Railroad is scheduled to be down for track maintenance from February 11 through March 29. This means that more of the DRR crew will be free to attend on March 18<sup>th</sup>, which is the normal day when the Barn and Steam Plant are open. We're sure that our guests will enjoy touring Walt's workshop in the Barn, seeing the Steam Plant in operation and taking a ride on the Disney Loop. Many of the Disneyland cast members (as they're called within the company) don't know the full story of how the 1950 construction of Walt Disney's live-steam 1/8-scale backyard railroad influenced Walt to start building Disneyland just a few years later. Walt himself became a charter member of our club soon after it was formed in 1956. We hope that everyone at LALS RM will take the opportunity to roll out the red carpet for our special Disneyland Railroad guests.

---

## Website Redesign in Progress

*By Donald Frozina*

The Museum's website, [www.lals.org](http://www.lals.org), is in the process of being redesigned to incorporate newer technologies in navigation and to facilitate the ease of making changes. Currently, the Museum's website contains over 2,300 files (of which there are

over 1,700 pictures and their corresponding thumbnail images) in 26 folders.

This redesign will incorporate a JavaScript<sup>®</sup> menu bar along the top of the browser's window (instead of the current side menu buttons), with pull-downs linking to subsections of the existing pages as needed.

The new menu bar will link to the following: Home, The Railroad, Historic Exhibits, Newsletter (the public version of the *Engine Booster*), Pictures (sorted by subject and by year), Other (including Calendar, Games, Links, Membership, etc.) and Contact Us. This new menu bar will greatly reduce the number of HTML (Hypertext Markup Language) files that need to be edited when adding new or changing old pages.

The redesign should be completed by mid-March.

---

The President's Message will return next month. —Ed

## Who's Been Workin' on the RR Jan. 8 — Feb. 3

|                      |                   |
|----------------------|-------------------|
| Altmayer, Steve      | Mahony, Chris x2  |
| De Phillip Jr., John | Moore, Todd       |
| De Rosa, John x2     | Nielsen, Flemming |
| Downing, Tom x5      | x2                |
| Downing, Wyatt x4    | Ruatta, Steve x2  |
| Frozina, Don         | Simpson, Skeet    |
| Hawkins, Rory x2     | Soibelman, Lew    |
| Hritz, John x2       | Valencia, Donna   |
| Kristman, Miles x2   | Young, Doug x2    |
| Lamont, Robert x3    |                   |



## Training Classes

**Safety:** 4<sup>th</sup> Saturday. *Level II* (private use) class at 9:30 am. This is a forty-five minute class with a multiple choice test. *Level I* (public operations) class at 11 am. This is an hour class with a multiple choice test. (Level II is the prerequisite for this class.) *Station Master/Safety Coordinator* class at 2 pm. This is an hour hands-on class. (Level I is the prerequisite for this class.)

**Conductor:** Want to learn to be a conductor? Call Roger Bacon at 818/887-0898 or Steve Harris at 818/842-2296 to schedule a class. There is an excellent DVD available to either borrow or own (\$5). The conductor class typically meets on a Saturday. Note: You must have completed both your Level II and Level I safety training to attend this class.

**Diesel Engineer:** Want to learn to operate the Museum's diesel/electric locomotives? Call Roger Bacon at 818/887-0898 or Gary Burdorf at 310/573-2019 to schedule a class. The diesel class typically meets on a Saturday with the check ride on the following Sunday. Note: You must have completed all your conductor requirements to attend this class.

## Engineers and Conductors January 2007

| <u>Date/Passengers</u>       | <u>Engineer</u>  | <u>Conductor</u>   | <u>Owner</u>   |
|------------------------------|--|--|--|
| 01/07/2007<br>986 passengers | Ron Tarjany<br>Peter Fuad<br>Al Way<br>Thaine Morris<br>G. Heiman<br>Larry Mitchell  | Gail Woodward<br>Bob Quinn<br>Bernie Harris<br>Peter Fowler<br>Ron Bergmann<br>Bob Quinn | B. Woodward<br>Fuad<br>Way<br>Morris<br>LALSRM<br>Mitchell |
|                              | Track Inspector: Al Way<br>Safety Coordinator: John De Phillip Jr.<br>Station Master: Roger Bacon<br>Station Assistant: Pat Miller |  |  |

|                              |  |  |   |
|------------------------------|--|--|---|
| 01/14/2007<br>780 passengers | Ron Tarjany<br>Al Way<br>Thaine Morris<br>Dan O'Brien<br>Ted Naimy   | Gail Woodward<br>Bob Quinn<br>Peter Fowler<br>M. Casey/J. Hritz<br>Roberto Lopez | B. Woodward<br>Way<br>Morris<br>O'Brien<br>LALSRM |
|                              | Track Inspector: Donald Frozina<br>Safety Coordinators: John De Phillip Jr., Roger Bacon<br>Station Master: Donald Frozina |  |   |

|                                |  |   |   |
|--------------------------------|--|---|---|
| 01/21/2007<br>1,255 passengers | Ron Tarjany<br>Al Way<br>Thaine Morris<br>Rory Hawkins<br>Ron Bergmann   | Gail Woodward<br>J. Dederian/M. Bruce<br>Peter Fowler<br>Donna Valencia<br>J. De Phillip Sr./J. Hritz | B. Woodward<br>Way<br>Morris<br>Hawkins<br>Bergmann |
|                                | Track Inspector: Al Way<br>Safety Coordinator: Peter Fuad<br>Station Master: Peter Fuad<br>Station Assistant: Pat Miller |   |   |

|                              |   |  |                       |
|------------------------------|---|--|-----------------------|
| 01/28/2007<br>674 passengers | Al Way<br>Peter Fuad<br>Wolfgang Hell   | Chris Solak<br>Bob Quinn<br>Bonnie Kaufman | Way<br>Fuad<br>LALSRM |
|                              | Track Inspector: Al Way<br>Safety Coordinator: Ron Bergmann<br>Station Master: John De Phillip Sr., Leni Goldberg |  |                       |

3,695 Total passengers for month

3,695 Total passengers to date

## In Memoriam

*By Lew Soibelman*

Gerry Bowden, a fellow live steamer, passed away on January 15, 2007. He was a master builder of steam and diesel engines and loved all facets of railroading. We send our condolences to his wife, Irma, and son, Gary. We will miss his warmth, camaraderie and his willingness to help others.

# 2007 Calendar of Events



~ January ~

|       |                                      |
|-------|--------------------------------------|
| 01/06 | <b>Change Directions</b>             |
| 01/06 | <b>Shed Changeovers</b>              |
| 01/07 | Public Rides                         |
| 01/08 | BOD Meeting                          |
| 01/14 | Public Rides                         |
| 01/21 | Public Rides/Disney Barn/Steam Plant |
| 01/27 | Work Day/Member Meeting              |
| 01/28 | Public Rides                         |

~ February ~

|       |                                      |
|-------|--------------------------------------|
| 02/01 | <b>Membership Renewals Due</b>       |
| 02/04 | Public Rides                         |
| 02/05 | BOD Meeting                          |
| 02/11 | Public Rides                         |
| 02/18 | Public Rides/Disney Barn/Steam Plant |
| 02/24 | Work Day/Member Meeting              |
| 02/25 | Public Rides                         |

~ March ~

|       |                                      |
|-------|--------------------------------------|
| 03/04 | Public Rides                         |
| 03/05 | BOD Meeting                          |
| 03/11 | Public Rides                         |
| 03/18 | Public Rides/Disney Barn/Steam Plant |
| 03/24 | Work Day/Member Meeting              |
| 03/25 | Public Rides                         |

~ April ~

|       |                                      |
|-------|--------------------------------------|
| 04/01 | Public Rides                         |
| 04/02 | BOD Meeting                          |
| 04/08 | Public Rides                         |
| 04/15 | Public Rides/Disney Barn/Steam Plant |
| 04/22 | Public Rides                         |
| 04/28 | Work Day/Member Meeting              |
| 04/29 | Public Rides                         |

~ May ~

|          |                                      |
|----------|--------------------------------------|
| 05/05    | <b>Change Directions</b>             |
| 05/06    | Public Rides                         |
| 05/07    | BOD Meeting                          |
| 05/13    | Public Rides/Disney Barn/Steam Plant |
| 05/19    | Work Day/Member Meeting              |
| 05/20    | Public Rides                         |
| 05/25-28 | <b>Spring Meet</b>                   |

~ June ~

|       |                                      |
|-------|--------------------------------------|
| 06/02 | <b>City of Hope Run</b>              |
| 06/03 | Public Rides                         |
| 06/09 | <b>Children's Hospital Run</b>       |
| 06/10 | Public Rides                         |
| 06/16 | <b>Potluck/Night Run</b>             |
| 06/17 | Public Rides/Disney Barn/Steam Plant |
| 06/23 | Work Day/Member Meeting              |
| 06/24 | Public Rides                         |

~ July ~

|       |                                      |
|-------|--------------------------------------|
| 07/01 | Public Rides                         |
| 07/02 | BOD Meeting                          |
| 07/07 | <b>EVL Run</b>                       |
| 07/08 | Public Rides                         |
| 07/15 | Public Rides/Disney Barn/Steam Plant |
| 07/21 | <b>Potluck/Night Run</b>             |
| 07/22 | Public Rides                         |
| 07/28 | Work Day/Member Meeting              |
| 07/29 | Public Rides                         |

~ August ~

|       |                                      |
|-------|--------------------------------------|
| 08/05 | Public Rides                         |
| 08/06 | BOD Meeting                          |
| 08/11 | <b>TTOS Run</b>                      |
| 08/12 | Public Rides                         |
| 08/18 | <b>Potluck/Night Run</b>             |
| 08/19 | Public Rides/Disney Barn/Steam Plant |
| 08/25 | Work Day/Member Meeting              |
| 08/26 | Public Rides                         |

~ September ~

|       |                                      |
|-------|--------------------------------------|
| 09/01 | <b>Change Directions</b>             |
| 09/02 | Public Rides                         |
| 09/10 | BOD Meeting                          |
| 09/09 | Public Rides                         |
| 09/15 | <b>Webb-Stutson Run</b>              |
| 09/16 | Public Rides/Disney Barn/Steam Plant |
| 09/22 | Work Day/Member Meeting              |
| 09/23 | Public Rides                         |
| 09/30 | Public Rides                         |

~ October ~

|          |                                      |
|----------|--------------------------------------|
| 10/01    | BOD Meeting                          |
| 10/05-07 | <b>Fall Meet</b>                     |
| 10/14    | Public Rides                         |
| 10/19    | <b>Member Halloween Party</b>        |
| 10/20    | <b>Public Night Halloween</b>        |
| 10/21    | Public Rides/Disney Barn/Steam Plant |
| 10/21    | <b>Public Night Halloween</b>        |
| 10/26    | <b>Public Night Halloween</b>        |
| 10/27    | Work Day/Member Meeting              |
| 10/27    | <b>Public Night Halloween</b>        |
| 10/28    | Public Rides                         |
| 10/28    | <b>Public Night Halloween</b>        |
| 10/31    | <b>End Shed Year</b>                 |

~ November ~

|       |   |
|-------|---|
| 11/01 | <b>Begin Shed Year</b>                          |
| 11/04 | Public Rides                                    |
| 11/05 | BOD Meeting                                     |
| 11/11 | Public Rides                                    |
| 11/17 | Work Day/ <b>Annual Member Meeting/Election</b> |
| 11/18 | Public Rides/Disney Barn/Steam Plant            |
| 11/25 | Public Rides                                    |

~ December ~

|       |   |
|-------|---|
| 12/02 | Public Rides                                  |
| 12/03 | BOD Meeting                                   |
| 12/09 | Public Rides                                  |
| 12/15 | <b>Holiday Party and Officer Installation</b> |
| 12/16 | Public Rides/Disney Barn/Steam Plant          |
| 12/22 | Work Day                                      |
| 12/23 | Public Rides                                  |
| 12/30 | Public Rides                                  |

Any calendar changes will be published in the *Engine Booster*. Deadline for *Engine Booster* submissions is the day after the Board Meeting.