

LALS ENGINE BOOSTER



★ ★ ★ ★ ★ "NEWS OF YOUR FRIENDS" ★ ★ ★ ★ ★

July 2005

www.lals.org

Vol. XL, No. VII

Reflections on the Spring Meet

By Lew and Bernice Soibelman

It seems that Bernice and I were still in the stages of planning the Spring Meet of 2005, and now it's a thing of the past. My, how time flies.

The attendance of both the people and the equipment was overwhelming during these great days. It was not surprising to see the steaming bays filled to capacity, as well as the full trains at rest in the various yards and sidings throughout the facility. That in itself speaks extremely well for the success of the Meet. The trackage was at capacity for most of the operating time; just ask those who drove from one red signal to the next red signal.

We had many RV's and trailers along the entire length of Crystal Springs Drive, and five units in the eastern parking lot. Tents were scattered all over the grassy areas in the space available. I do not believe that we could have places for many others.

When we think of our growling stomachs, it was sure nice to know that meals were just waiting at almost all times of the morning, noon and evening. From Friday lunch to Monday lunch, there was no meal missed. The catered Saturday evening dinner and the great swing music of *The Esquires*, topped off the fantastic activities of that day's operations.

We should be very pleased with the showing of vendors, and seeing our members and guests visiting their displays, was very gratifying. The sales of souvenirs, and those of both the adult and children raffle tickets were very successful and produced a variety of great and rewarding prizes for all those who were involved and won.

Did you loose your children during the Meet? Well, they were probably at the Crafts Corner having the time of their life creating all types of crafts. We hope you found them and took them home with you (although no one seemed to be left behind).

(Continued on page 7)

EVL Run

Don't forget that the EVL Run is on Saturday, July 9th starting at 5 pm. To participate, you must sign up. Contact Don Frozina, 661/949-6107, for information.

Member Calendar

Jul. 9	EVL Run
Jul. 11	Board Meeting
Jul. 16	Work Day
	General Meeting
Jul. 23	Potluck/ Night Run
<hr/>	
Aug. 8	Board Meeting
Aug. 13	TTOS Run

*Board/General Meetings begin at 7 pm.
Potlucks/Night Runs begin at 6 pm*

Public Service Schedule

Jul. 3	Public Rides
Jul. 10	Public Rides
Jul. 24	Public Rides
Jul. 16	Disney Barn Open
Jul. 17	Public Rides/ Steam Plant Open
Jul. 31	Public Rides
<hr/>	
Aug. 7	Public Rides

In This Issue

After the Meet	7
Big Turnout of Smaller Gauges	7
Continuous Membership	
Anniversaries	8
General Meeting Highlights	2
General Superintendent	3
President's Message	3
Remember When...	3
Splinters from the Board	2
Spring Meet Photos	4-5

Splinters from the Board

June 6, 2005

By George Bass

The minutes of the previous meeting were approved as presented. Two party requests were approved. A donation of \$50 from Gene Allen, of Allen Models, was gratefully accepted. The Treasurer Report was accepted.

Steve Harris introduced new member Mike Casey. There are two hundred and forty-seven resident members. Shed credit will be given for working in the Souvenir Stand.

The Board allotted \$15,000 to purchase sufficient rail, consistent with the current profile and to obtain the best price. There was discussion regarding that future major rail purchases should be amortized over multiple year budgets.

There should be registration for all trains at the Meets. This registration should include basic rules. A P&P will be written which specifies Sutchville as the official station during Meets. All qualified conductors should have a red flag and a whistle. The restrooms should be more closely monitored during Meets. Tom Downing reported that the City's sewer pump is the only outstanding issue to be addressed.

The Kitchen Improvement Fund donations were increased by the Spaghetti dinner. A commercial refrigerator has been purchased. The fundraising will continue to meet the goal of \$3,000 to purchase a commercial microwave, as well as a Snapple machine.

The registration booth has been repaired. The souvenir stand has been repositioned and pricing of souvenirs was discussed. The tie stock has arrived. Fourteen memorial plaques have been made and installed.

There was a proposal by Mike Romanucci to install automotive wedge-base LEDs in the signals.

General Meeting Highlights

June 18, 2005

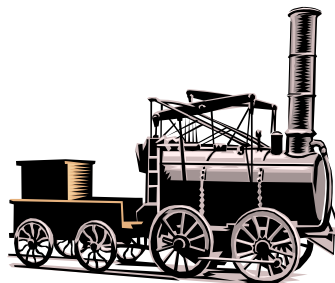
By George Bass

The General Meeting on June 18, began with a review of the minutes of the Board meeting. Tom Downing brought the membership up to date on the accomplishments of the workday, namely that trimming was done, items were replaced and a large sinkhole was filled. The City is still working on the sewage pumping system with no immediate solution in sight. This has been an ongoing problem for years.

The tie stock was discussed and it was further mentioned that LALSRLM might piggyback with another club in purchasing rail. Any major track should be replaced with steel track.

There was a lengthy discussion regarding an engine at the Meet. The Board was interested in receiving feedback from the membership. Several members gave their opinions, letters were read and an informational vote was taken to indicate a feeling of the membership present. The Board will further discuss this at the next Board meeting.

Dave Johnson gave an overview of the current insurance policies and discussed the possibility of offering fire and theft insurance to members at a reduced cost.



Los Angeles Live Steamers Railroad Museum *Engine Booster*

The *Engine Booster* is the monthly publication of the Los Angeles Live Steamers Railroad Museum, a non-profit 501(c)(3) organization. Museum/tracks are located in Griffith Park, 5202 Zoo Dr., Los Angeles, CA. Mailing address: PO Box 2156 Toluca Lake, CA 91610.

The *Engine Booster* is edited and laid out by Donald Frozina and is produced on a PC using Microsoft® Publisher 2000 software. Articles and photos are always welcomed, although the right is reserved to edit all copy. Deadline is the 20th of the month prior to publication. Input can be dropped into the "Booster" mailbox in the UP caboose, mailed, e-mailed or faxed as follows:

Donald Frozina 2132 Bend Ave. Lancaster, CA 93535
E-mail: booster@lals.org Fax: 310/302-4111

Los Angeles Live Steamers Railroad Museum Board of Directors 2005

President
Vice President
Secretary
Treasurer

Directors



Donald Frozina
David Johnson
George Bass
Eric Fields

Gary Baker
Roger Bacon
Fred Lack
John Smith

Phone 323/661-8958

FROM THE **General Superintendent**

By Tom Downing



First, I would like to thank both Sam Calderwood and Tom Crawford for all the time they put into the Museum. I'm sure it's very much appreciated by all the members. I have been left with a big hole to fill... "literally" that is. The subject hole, which is approximately 3 ft. wide, 6 ft. long and 6 ft. deep is between the trestle and the 1" yard. The latest story on the hole is that it came from an old building foundation that was here during WWII or it was from an old tree stump that just rotted out. I liked the first story best.

The workday on June 18th went well. We had great weather and around 25 or so members came out for some work-type fun. Many shrubs were trimmed and a whole bunch of small fix-it type jobs got taken off the list. A BIG thank you to Mel Bresee and his family for providing a very tasty picnic-style lunch. This was a nice change and seemed to keep the beehive of activities going well into the afternoon on both the 1" and 1½" tracks.

At this time, it looks like the Museum's tractor needs a new clutch installed. If any member can help with this, please call Don Frozina or me. Next workday is July 16th. If you come out to the Museum at any time and need to find something to do, look in the Red Book located by the phone in the Gazebo. There is a "Things To Do" list inside the Red Book.

New members – please remember to fill out a time card and turn it in. If any member needs help with a special project dealing with the facility, or if you have any helpful suggestions, please drop me a note in the Superintendent's Box or give me a call. With your help, we will only make this a better place. See you out on the rails.

Remember When...

By Doug Alkire

Looking West at the new 1" and ¾" scale boiler water tank near the North Station at LALS. 1963.



From the I.D. Alkire Collection

President's MessageBy Donald Frozina
Photo by Dani Smith

We had a great Spring Meet! Many, many steam engines were out and about the track. The food was varied and excellent. The big band music by *The Esquires* was inspiring. Thank you Lew Soibelman for coordinating the Meet. Thanks also to all the persons who prepared the meals, ran the gate, and did the other myriad of things that makes a Meet successful.



On Friday night of the Meet, Dick and Nini Jensen were honored for 20 years of outstanding service to the Museum. Dick opens and closes the station every

Sunday, counts the donations, prepares the coffee, and picks up the donuts for Sundays and for the meeting nights. Dick and Nini also mail out the *Engine Booster* each month, and the *Roster* each year. This includes stuffing the envelopes, and putting on the labels and stamps. Thank you again Dick and Nini for all your hard work!

At the July General Member Meeting, we want to get your ideas for our 50th Anniversary celebration at the 2006 Spring Meet. Gary Baker will be the coordinator for this Meet, and he looks forward to hearing from you to make next year's Spring Meet our best ever!

Training Classes

Conductor: Want to learn to be a conductor? Call Roger Bacon at 818/887-0898 or Eric Fields at 818/205-1653 or Steve Harris at 818/842-2296 to schedule a class. There is an excellent DVD available to either borrow or own (\$5). The conductor class typically meets on a Saturday.

Diesel Engineer: Want to learn to operate the organization's diesel locomotives? Call Roger Bacon at 818/887-0898 or Gary Burdorf at 310/573-2019 or Eric Fields at 818/205-1653 to schedule a class. The diesel class typically meets on a Saturday with the Check Ride on the following Sunday. Note: You must have completed all your conductor requirements to attend this class.

Steam Engineer: Want to learn to operate the organization's steam locomotive? Call Wolf Fengler at 310/328-7283 to schedule a class. Note: You must have completed all your diesel engineer requirements, and have logged at least 40 hours as a diesel engineer, to attend this class.



2005 SPRING MEET

Here are a few photos from our 2005 Spring Meet. You can see more pictures, in color, on our website, www.lals.org

Photos by Bruce Ward, Dick Brennan, Dani Smith and Rory Hawkins



2005 SPRING MEET

Here are a few photos from our 2005 Spring Meet. You can see more pictures, in color, on our website, www.lals.org

*Photos by
Bruce Ward,
Dick Brennan,
Dani Smith and
Rory Hawkins*

Engineers and Conductors May 2005

<u>Date/Passengers</u>	<u>Engineer</u>	<u>Conductor</u>	<u>Owner</u>
05/01/2005	Chuck Mohr	Ray Secara	Mohr
880 passengers	Peter Fuad	Roberto Lopez	Fuad
	Tracy Beattie	Bob Quinn	Beattie
	Larry Mitchell	Joe Hayes	Mitchell
	Fred Lack	Roberto Lopez	Fuad
	Peter Nott	James Derderian	Nott
	L. Evans/B. Sissons	Rory Hawkins	LALSRM

Station Assistants: Pat Miller and Fred Lack

05/08/2005	Chuck Mohr	Ray Secara	Mohr
649 passengers	Michael Romanucci	B. Phillips/G. Klose	LALSRM
	Steve Harris	Bernie Harris	Harris
	Todd Moore	Denis Finnegan	Moore
	Peter Fuad	Roberto Lopez	Fuad
	Fred Lack	B. Phillips/G. Klose	LALSRM
	Bill Phillips	Fred Lack	LALSRM

Station Assistants: Pat Miller, Lucille Secara, Roger Bacon and Gail Woodward

05/15/2005	Chuck Mohr	Ray Secara	Mohr
865 passengers	Peter Fuad	Bob Quinn	Fuad
	Bill Phillips	Gail Woodward	LALSRM
	Peter Nott	John DeRosa	Nott
	Sam Calderwood	Rowland Fogarty	Calderwood
	Thaine Morris	E. Fields/D. Ward	LALSRM
	Jon Newbill	Daniel Newbill	Newbill
	Michael Romanucci	Mike Bruce	LALSRM
	Bonnie Kaufman	<i>unknown</i>	Kaufman

Station Assistants: Pat Miller, Lucille Secara and Gail Woodward

05/22/2005	Chuck Mohr	Ray Secara	Mohr
575 passengers	Bonnie Kaufman	Gail Woodward	Kaufman
	Peter Fuad	Joe Hayes	Fuad
	Peter Nott	Wolf Fengler	Nott
	Andy Blake	Bart Sissons	Sissons
	Jon Newbill	Gail Woodward	Newbill

Station Assistant: Gail Woodward

05/29/2005 *Spring Meet*

2,969 Total passengers for month
15,150 Total passengers to date

Who's Been Workin' on the RR

May 22 — Jun. 18

Akins, Tom	Fidger, Tom
Baker, Jim	Frozina, Donald
Berg, Ginny	Heiman, Gene
Berg, Ted	Holman, David
Casey, Kory	Holman, Zack
Casey, Kyle	Lamont, Robert
Casey, Mike x2	Quinn, Bob
Casey, Zane	Soibelman, Lew
Crone, Bob	Ward, Doug
Downing, Tom x2	



For Sale

10" Atlas lathe, excellent condition. Includes 3-jaw, large 4-jaw chucks and collets. \$650.00. Call Brad Bluth, 310/450-8016.

"Antique" (circa 1954) refrigerator. Sears Coldspot. Semi-automatic defrost. Runs as good as ever. *FREE*. Contact Jerry Brown, 310/837-3442.

Pair of 1½" scale cast boxcar ends by Cannonball. \$130.00/OBO for pair. Contact Al Way, 805/452-1408.

Member Orientation & Inclusion Program

By Leonard Evans

These sessions are open to all members, new and old, by calling Leonard Evans, 310/871-9255. Sessions will be arranged based on getting calls. The 3rd Saturday of the month is the day and 9 am in the meeting car is the time and place. Sessions will be held only if I get called in advance!

Wanted

4.75" gauge steam loco, small to medium size. Must be substantially complete. Will pay reasonable price. Contact Gerhard Klose, 323/663-0769, or gklose@jpl.nasa.gov.

Reflections (Continued from page 1)

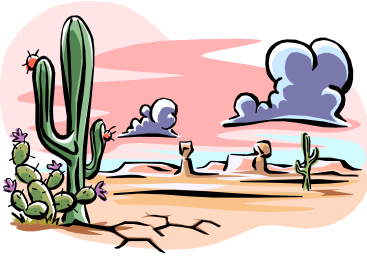
The activity of the trains and the variety and the type of trains was a never-ending parade of the skill and showmanship of our attendees. This lasted for at least four days and three evenings. Thanks for exhibiting your trains!

Did you notice the large amount of small-scale equipment that kept the smaller gauge tracks showing silver throughout the Spring Meet? The amount and different styles of these smaller trains was a great salute to these gauges. Every year we seem to add to the enjoyment of these scales and to its improved trackage. We were very encouraged to see so many people participating in this activity. Lest we forget, there was great interest and pleasure in the G-gauge railroad with many participants. The new inner loop added greatly to the challenge of operation. Won't it be great when the outer and inner loops are connected? You really have to be on your toes then.

You have probably noticed by now that we have not tried to name anyone in particular for their tremendous assistance in producing such a wonderful Meet. There were so, so many who helped in one way or another, we just want to tell you all—and you know who you are—thank you so much! Without you, this Spring Meet could not have been produced.

After the Meet

By Leonard Evans



After the Meet, I talked to a visitor who has come to the Museum for many years. He helped in many early work projects and hung out with the members. He remembered them and those times with me as

we talked. Here is what he recalled on the Tuesday after the Meet at about 6 pm.

He remembers many members being at the Museum after the Meet for several days cleaning up, running equipment and talking. To him, the members were all good friends, on top of their love of steam trains and the railroad. They were all very knowledgeable and sometimes, in fun, would tease him about what he did not know. Yet, they were always eager to help in directing him so that he could work on projects too. The camaraderie, friendship, and fun of working with knowledgeable people are what he recalled.

He wants to come back more often and join our Museum. What will he find? This was Tuesday after the Meet at about 6 pm and we were alone...

Big Turnout of Smaller Gauges

By Ted and Ginny Berg



This is a “build it and they shall come” report. The upgrades and additions to the 3½” and 4¾” gauge

tracks resulted in 12 steamers, 9 diesels, and 2 electric motive units. Andy Romer and Chris Wahl ran 3½” gauge steamers. Since the Riverside 1” track is gone, Casey Farwick steamed his 0-4-0T. Dain Lones brought his 4-6-2 Pacific, Bruce Ward his 0-4-2 Lion, Jack Swanton his 4-4-2 Atlantic, and Richard and Ron Farmer ran their 0-4-2 Ajay “Gemini”. Tom Downing brought a 2-4-0 Raritan, Steve Davies his 2-6-0 Mogul, and Bob Crone exercised his 1½” scale, 4¾” gauge 2-6-0 and a D&RG #50 with beautifully detailed 3’ N.G. freight cars.

Mike and Andy Devlin hauled at least an eighteen car consist plus several adults with their F7A and F7B, and demonstrated that their 0-4-0 1” scale Riding Railkits switcher could handily do the same! It is a rugged little engine. Glen Lane brought his beautiful 0-4-0 #7 Chicago and Northwestern and detailed cars along with his popular old type steam powered popcorn machine. Bonnie Kaufman brought her train also for the enjoyment of many children. The children did just fine with us older children! New member, Mark Lundquist, came on the last day with his solid steel 0-4-0 switcher.

A variety of other diesels included Tom Downing’s Alco FA (Tom also brought a Pacific Electric streetcar), John DeRosa with an F7A, Ted and Ginny Berg with their GP-9, RPO-BAG car and a new 50’ REA refer with working ice bunkers, and John and Pat Yells with their EMD F7 “Gecko Belt”. Last, but of great imagination, was Gary Raymond’s “Terranilus”, a radio-controlled, futuristic concept with flashing, swiveling, recoiling cannons on the 3½” gauge track suggestive of a Jules Verne creation.

Thanks to track superintendents Chris Mahony and John DeRosa, with significant help from Tom Downing, Andy Romer, and Ted and Ginny Berg. Twenty-four motive units made a grand showing for the new interest in the 3½” and the 4¾” gauges at LALSRM, the only public track remaining (and growing) in Southern California.

Roster Vendor Correction

By Donald Frozina

In the 2005 *Roster*, we inadvertently printed the wrong telephone number for Kamilion Locomotive. The correct telephone number is 810/797-5575. Kamilion Locomotive’s website address is **Kamilionlocomotive.com**. Please check out their fine products. We apologize for any inconvenience.

Continuous Membership Anniversaries in 2005

The following persons are celebrating a continuous membership anniversary this year—in multiples of 5 years. If you should run into one of these persons, tell them “Congratulations!” All have contributed to our Museum in their own way.

45 Years

George R. Pacal

40 Years

Bob Lee Julyan

35 Years

Jerry E. Brown
Mike A. Capolupo

Harold W. Hoadley
Richard N. Howe

30 Years

Leonard P. Barach
Kathryn Rhinehart Bassett
Barry L. Hauge

Louis S. Mooney
Lewis J. Soibelman

25 Years

Gary J. Armitstead
John De Phillip Jr.

Daniel F. O'Brien
Jacqueline L. Semerau

20 Years

Melvin A. Bresee
Lawrence R. Glenn
Richard A. Glenn
Richard B. Jensen
Whitney D. Johnson

Vincent A. Knight
Edward B. Merchant
Sherman D. Simpson
Brian D. Trembley
Douglas S. Young

15 Years

Brad Bluth
John J. De Phillip Sr.
Mike Fleshman

Tim Lagaly
Tom Lang
Peter Nott

Charlie Ockwell
Richard A. Ronne
Gail Woodward

10 Years

Ronald W. Bergmann
Solomon Cates
Stephen F. Davis
Peter H. Fuad

John E. Goulding
Steven J. Harris
David B. Lazarus
Dain Lones

Scott R. Losmandy
Andy J. Skowronski

5 Years

Stephen W. Altmayer
Gary H. Burdorf
James C. Cammarata
Brian M. Clark
Paul C. Corr
Stephen Davies
Glenn L. Downing

Wolfgang A. Fengler
Greg K. Häff
Rory T. Hawkins
David Johnson
Robert S. Kammermann
Patrick K. Ledbetter
Diana C. Manchester

Eric J. Minton
Michael P. Murphy
Steven Schipper
Anthony C. Stein
Carl W. Unglaube
Charles J. Westphal
Vera Zakuto

