



# LALS ENGINE BOOSTER

March 2005

www.lals.org

Vol. XL, No. III

## Who's Been Cookin' in the Kitchen

By Eric Fields



We all know how important the kitchen is to the Museum. On work Saturdays, it keeps all of our volunteer workers happy. On Sunday, it gives the engineers, conductors, and station personnel a place to get lunch. It also provides a great place to sit, talk, and meet new and old friends.

For those of you who have been to the Museum in the last few weeks, you may have noticed that the kitchen is once again open. Thanks to Roger Bacon, Donald and Larissa Frozina, Bonnie Kauffman, the *Society for the Preservation of Railway Dining* (SPRD) "potluckers", David Garber and family, Steve Harris and Shira Bush, and Danielle Smith for helping to make that possible.

The Museum's challenge with the kitchen is that everyone wants to eat lunch but not enough want to volunteer to cook it. In the past, it was not unusual for one or two people to be stuck working in the kitchen *every single week*. We want to change that! We are asking for volunteers to step forward and man the kitchen for one week. Volunteers can range from a group of folks hosting it together. Perhaps you and your family would consider hosting the kitchen. The more people we have that volunteer, the easier it is for everyone. However, if we don't have volunteers for that week, the kitchen will not open. I have volunteered to coordinate purchasing of supplies and make sure that each week the hosts have everything they need to operate the kitchen. The sign up sheet is located on the grill hood in the kitchen. Besides getting shed credit, working in the kitchen is a great way to meet people.

If we can get enough people to volunteer to host the kitchen each week, everyone can enjoy a lunch and get to enjoy running their trains! Please consider donating one Sunday every two or three months to continue to make our kitchen a great place! Happy railroading and EATING!

## Member Calendar

Mar. 7	Board Meeting
Mar. 19	Work Day General Meeting

---

Apr. 4	Board Meeting
--------	---------------

*Board/General Meetings begin at 7 pm.*

## Public Service Schedule

Mar. 6	Public Rides
Mar. 13	Public Rides
Mar. 20	Public Rides Disney Barn Open Steam Plant Open
Mar. 27	Public Rides

---

Apr. 3	Public Rides
--------	--------------

## In This Issue

Appointees for 2005	6
Engineers and Conductors	4
General Meeting Highlights	2
General Superintendent	3
Items Needed for Crafts Booth	5
Member Orientation and Inclusion Program	3
President's Message	3
Remember When...	3
RR Word Jumble	4
Safety Chairman	5
Small Scale Locomotive Owners	5
Splinters from the Board	2

## Splinters from the Board

### February 7, 2005

By George Bass

The meeting began with the Board reviewing the minutes of the previous meeting, correspondence and the Treasurer's report. All were accepted. The party request form has been reworked to reflect three changes.

Steve Harris introduced new members Henry Villafina (who had helped with a recent water leak) and Denis Finigan. Robert Butler of Tehachapi joined too.

Dues has been collected for 321 memberships. There are no responses from 146. There are 43 special members and 3 low-income status. There was a motion to accept (Fields/Bacon) and the motion carried. All trains have been moved on shed change day. There are 67 paid shed leases with 1 pending. There are three on the waiting list.

Superintendent Tom Crawford has developed a punch list which indicated jobs to be completed on the next workday. There are two rain related water leaks in the office caboose.

There is one track off of the ties in front of the pump house. The broken lead switch on the east side has been fixed. There have been 142,691 "hits" on the website from over 18,000 hosts. The non-resident application for membership will be placed on the website.

A bluegrass band has asked to play during the day at the Spring Meet. There will be no charge as they want exposure. Leonard Evans reported that to date there are 27½ pages of ads for the *Roster*. Last year there were 14. Placing ads in the *Engine Booster* was discussed with no action taken. This needs further discussion.

The yearly budget was presented and discussed. There will be no further expenditures for the souvenir stand. The stand will be discussed at the next board meeting. Highlights of

## General Meeting Highlights

### February 19, 2005

By George Bass

The meeting began on Saturday, February 19<sup>th</sup> with a spaghetti dinner attended by approximately thirty-eight members. At 7 pm, President Don Frozina introduced Board Member Eric Fields who lead a "Roundhouse" discussion, designed to identify suggestions which will improve the Museum. These suggestions would focus on the upcoming Fiftieth Anniversary of the Museum as well as concerns regarding the general maintenance and operation of the facility. Board Member Gary Baker wrote each suggestion on an easel.

(Continued on page 6)

the budget included \$5,500 for club cars, \$3,000 for signals, \$1,000 for miniature buildings and \$80 for First Aid. All expenses and sales will be placed into separate categories. There will be a category for expenses for each engine and each type of car. There was a motion to accept (Johnson/Bacon) with the changes discussed. The motion carried.

East Valley Lines N scale group has offered to join us for a special event. More discussion will follow.

Leni Goldberg suggested that a garden club be contacted to help with grounds maintenance. He will pursue this. Dick Brennan will replace a "Prop. 65" sign at the service entrance. Louis Mooney's trailer will be moved within 30 days.

Peter Fuad will file the new name and logo electronically to register them as our trademarks. The cost will be \$350 for the name and \$350 for the logo.

### Los Angeles Live Steamers Railroad Museum *Engine Booster*

The *Engine Booster* is the monthly publication of the Los Angeles Live Steamers Railroad Museum, a non-profit 501(c)(3) organization. Museum/tracks are located in Griffith Park, 5202 Zoo Dr., Los Angeles, CA. Mailing address: PO Box 2156 Toluca Lake, CA 91610.

The *Engine Booster* is edited and laid out by Donald Frozina and is produced on a PC using Microsoft® Publisher 2000 software. Articles and photos are always welcomed, although the right is reserved to edit all copy. Deadline is the 20<sup>th</sup> of the month prior to publication. Input can be dropped into the "Booster" mailbox in the UP caboose, mailed, e-mailed or faxed as follows:

Donald Frozina 2132 Bend Ave. Lancaster, CA 93535  
E-mail: booster@lals.org Fax: 310/302-4111

### Los Angeles Live Steamers Railroad Museum Board of Directors 2005

**President**  
**Vice President**  
**Secretary**  
**Treasurer**

Donald Frozina  
David Johnson  
George Bass  
Eric Fields

**Board Members**

Gary Baker  
Roger Bacon  
Fred Lack  
John Smith



Phone 323/661-8958

FROM THE **General Superintendent**

By Tom Crawford



This last month seemed to be the month of busted pipes. From boiler water and air pipes, to the water main itself, kept our expert pipe repair members were hard at work. Thanks to the few members that aren't scared to turn soil and fix

pipes. Also, thanks to everyone that comes in on non-work days and volunteers their time.

For those of you that didn't show up for the workday this last month, don't worry there will be another one next month on the same day and time (that's March 19<sup>th</sup>). Actually, we were rained out and not much got done. The rain did show us another air leak in an underground air pipe. It's funny how compressed air *bubbles* when it's under water.

My new punch list is now done. A copy of *Things to do Around this Place* can be found inside the *Who's Been Working on The Railroad* binder next to the telephone that's in the gazebo. Any member that can't find a special project to do around here should find something on the list.

For those of you that come out and work 4 hours on the next workday, you will get a free lunch courtesy of the kitchen. New probationary members don't forget to fill out and turn in your yellow time cards for your time worked.

**President's Message**

By Donald Frozina



Well, we've had another rainy month. Fortunately so far, no major mud and dirt has spilled onto the tracks. Our workday was rainy too—not much was completed, although we did get the pine needles off the restroom and the gazebo roofs.

Our general member meeting went well. The 32 persons attending gave the Board many great suggestion during the "Roundhouse" portion of the meeting. The Board will now review those suggestion and take appropriate action. Thanks to Eric Fields for facilitating that part of the meeting.

Just in case you haven't really noticed, or haven't attended the last Board or general member meetings, the PA System in the meeting car has been replaced. Comments from the persons attending have indicated a marked increase in the quality and intelligibility of the sound. This is all thanks to Gary Raymond, who found us the system and installed it.

If you read Tom Crawford's General Superintendent column, you will notice that he has placed a list of *Things to do Around this Place* in with the *Who's Been Workin' on the Railroad* binder next to the phone in the gazebo. The idea behind this is that members who come in on weekdays can check out the list and find something to work on.

**Remember When...**

By Doug Alkire

Looking West preparing for the concrete slab pour at the North Station at LALS. 1958.



**Member Orientation and Inclusion Program**

By Leonard Evans



Saturday, March 19<sup>th</sup>, 2005, open to all members, there will be an orientation and inclusion session in the Museum's meeting car. First a video history of live steam 1890 to the present, then a walk through the facility to meet briefly with different volunteers, while observing some of their activities. This way, you'll know the history of live steam, who does what and who to see if you have an interest in becoming more involved. We'll go to lunch at noon (dutch), watch another video and then learn some track maintenance.

We all enjoy the work from past members today, so the question becomes, what do we enjoy that we can contribute for tomorrow? Starts 9 am. Questions or suggestions contact Leonard Evans, 310/871-9255.

## Engineers and Conductors January 2005

<u>Date/Passengers</u>	<u>Engineer</u>	<u>Conductor</u>	<u>Owner</u>
01/02/2005 377 passengers	Ron Tarjany	Pat Miller	Tarjany
	Peter Fuad	Thaine Morris	Fuad
	Shira Bush	Bernie Harris	S. Harris
	Michael Romanucci	Rory Hawkins	LALSRM
	Todd Moore	Gary Hartman	Moore
	Station Master: Tom Downing Site Manager: Steve Harris		
02/09/2005	<i>Rain</i>		
02/16/2005 821 passengers	Bob Woodward	Gail Woodward	Lesovsky
	Peter Fuad	Robert Quinn	Fuad
	Michael Romanucci	Chuck Mohr	LALSRM
	Bonnie Kaufman	Doug Ward	LALSRM
	Eugene Heiman	Roger Bacon	LALSRM
	Mike Murphy	Andy Skowronski	Murphy
	Gary Baicen	Michael Bruce	Rowsell
	Larry Mitchell	Bart Sissons	Mitchell
	Jon Newbill	Larry Varblow	Newbill
	Todd Moore	Gary Hartman	Moore
	Doug Ward	E. Fields & E. Heiman	LALSRM
	Michael Bruce	Chris Solak	LALSRM
		Station Master: Roger Bacon Station Assistant: Pat Miller	
01/23/2005 763 passengers	Peter Fuad	Donald Frozina	Fuad
	Rory Hawkins	Tom Downing	Hawkins
	Bonnie Kaufman	Monica Gibson	Kaufman
	Aaron Emmer	G. Woodward/S. Morris	Emmer
	Michael Romanucci	Roberto Lopez	LALSRM
	Roger Bacon	Thaine Morris	LALSRM
	Joe Powell	<i>unknown</i>	Rowsell
	Station Master: Cynthia Izen Station Assistant: Pat Miller		
01/30/2005 753 passengers	Michael Romanucci	Doug Ward	LALSRM
	Bob Woodward	Gail Woodward	Woodward
	Bonnie Kaufman	Monica Gibson	Kaufman
	Peter Fuad	Bob Quinn	Fuad
	Mike Murphy	Andy Skowronski	Murphy
	Larry Mitchell	Joe Hayes	Mitchell
	Eugene Heiman	G. Woodward/G. Klose	LALSRM
	Sam Calderwood	Tracy Beattie	Calderwood
	Bart Sissons	Andy Blake	Sissons
	Todd Moore	Gary Hartman	Moore
	Michael Bruce	<i>unknown</i>	LALS
	Station Master: John DePhillip Sr.		

## Training Classes

**Conductor:** Want to learn to be a conductor? Call Roger Bacon at 818/887-0898 or Eric Fields at 818/205-1653 or Steve Harris at 818/842-2296 to schedule a class. There is an excellent video available to either borrow or own (\$5). The conductor class typically meets on a Saturday.

**Diesel Engineer:** Want to learn to operate the organization's diesel locomotives? Call Roger Bacon at 818/887-0898 or Gary Burdorf at 310/573-2019 or Eric Fields at 818/205-1653 to schedule a class. The diesel class typically meets on a Saturday with the Check Ride on the following Sunday. Note: You must have completed all your conductor requirements to attend this class.

**Steam Engineer:** Want to learn to operate the organization's steam locomotive? Call Wolf Fengler at 310/328-7283 to schedule a class. Note: You must have completed all your diesel engineer requirements, and have logged at least 40 hours as a diesel engineer, to attend this class.

## RR Word Jumble

**TEMSREAS**

— — — — — — — —

**EMUUMS**

— — — — — — — —

**IGEENN**

— — — — — — — —

**OIDALRAR**

— — — — — — — —

**NASLGI**

— — — — — — — —

**EPMERHSAO**

— — — — — — — —

**ETRND E**

— — — — — — — —

**SKATCR**

— — — — — — — —

**EVIL**

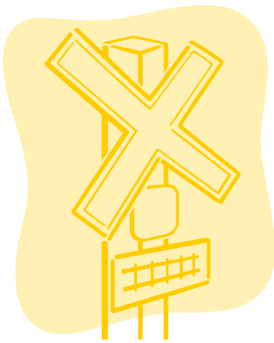
— — — — — — — —

2,714 Total passengers for period  
2,714 Total passengers for 2005

Answers: steamers, museum, engine, railroad, signal, semaphore, tender, tracks, live.

FROM THE **Safety Chairman**

By Doug Young



Over the next couple of issues of the *Engine Booster*, I want to highlight some of our more important rules from the 2003 edition of our *Safety and Operating Rules* book.

When we joined the Museum, we all received a copy of the rules book, and you probably studied it prior to taking your conductor and/or engineer safety test. It is recommended that you carry this book with you when operating. Copies of the 2003 edition were distributed to everyone in mid 2003. If you don't have a copy of this edition, ask any Board member for a copy.

In this issue, I want to highlight two rules:

118. Signals must be obeyed when operating on signaled track.
119. On track not signaled, trains must keep a minimum distance of 100 feet apart while running. After making a complete stop, a train may approach to within one car length of the train ahead, if that train is stopped.

We have a fully functional signal system. Please obey them. On a single-headed signal mast, the following is true:

- A green signal means clear track ahead; proceed at a safe speed.
- A yellow signal means that the next block is occupied, so proceed with caution and be prepared to stop at the next signal.
- A red signal means that the next block is occupied, so stop a few feet back of the signal.

If the signal mast exhibits the letter "A" (for Absolute), a train must NOT proceed until the light changes or if given permission by a flag or signal person. If there is no "A", stop, then proceed at reduced speed. Prepare to stop short of the train ahead.

Following the signals will provide for more prototypical operation and increased safety.

**Attention all Small Scale Locomotive Owners**

By Christopher Mahony

Recently, I have been privileged to see some photographs of the LALSRM operating in the 1970's and there were a LOT of 1" and 3/4" locomotives with excellent looking rolling stock on the Silver Rails—some 4-6-2's, 0-4-0's, 2-8-2's and others. We would like to see this equipment if it is still around and I think the public would like to see it also. So, on every third Sunday, I am proposing "Small Scale Day". Dust off that 1" or 3/4" equipment that has been sitting in the garage, storeroom, or boxes, with your best passenger equipment, your freight cars, MOW equipment and run it. With the Steam Plant and Disney Barn being open, and the public riding, I hope this will spark some interest in our hobby.

The 1" and 3/4" lines are being restored, with new exciting plans for the future. The Spring Meet is also coming up, and I would like to see a good showing of the smaller gauge equipment. They are unique and deserve to be seen by the members and the public. If you know anybody at other clubs in the Southern California area with 1" or 3/4" equipment, please tell them about "Small Scale Sundays".

**Items Needed for Crafts Booth**

By Carolyn Hayes



Below is a list of items that I need donated to stock the crafts booth.

- |  |                                       |
|--|---------------------------------------|
| cigar boxes                                    | ribbon, ric rac, yarn, trim, pom poms |
| old, clean socks and rags (even very small)    | buttons, sequins, beads               |
| old blankets, sheets, tablecloths and t-shirts | stencils                              |
| pogs and puzzle pieces                         | panty hose or nylons                  |
| unwanted jewelry or parts                      | McDonald's McFlurry spoons            |
| stray parts of anything                        | paper grocery bags                    |
| magnets (outdated calendars, etc.)             | old keys                              |
| scraps of fabric, felt, lace, eyelets          | walnut half shells                    |
|  | wallpaper or gift wrap (even used)    |
|  | CDs                                   |
|  | pictures or stickers                  |
|  | coffee cans                           |
|  | (all kinds, all sizes)                |
|  | corks                                 |
|  | crayons                               |
|  | clothes hangers                       |

Items may be left with Danielle Smith. Other items and suggestions are welcome. For more information contact Carolyn Hayes, 310/329-0574.

## Appointees for 2005

### Bylaw Appointees

General Superintendent	Thomas Crawford
Membership Chairman	Steve Harris
Program Co-Chairmen	George Bass
	Leonard Evans
	Richard Jensen
Facilities Planning Chairman	David Johnson
Publicity Chairman	Leonard Evans
Safety Chairman	Douglas Young
Standards Co-Chairmen	James Baker
	Robert Lamont
Operations Chairman	Wilbur Wilhelm

### Superintendents

Conductors	Steve Harris
Diesel Locomotives	Gary Burdorf
	Tom Downing
Electric Locomotive	Willie Wilhelm
Riding Cars	James Cammarata
Signals	Michael Romanucci
Steam Locomotive	Wolfgang Fengler

### Boiler Inspectors

James Cammarata	Wolfgang Fengler
Jim Lesovsky	Daniel O'Brien
Bob Woodward	Douglas Young

### Meets, Special Runs and Events

East Valley Lines Run	Gary Baker
Spring Meet	Lewis and Bernice Soibelman
City of Hope Run — Cancer Survivors Run	Daniel O'Brien
Big Train Show Run	John Smith
Children's Hospital of LA — Cancer Survivors Run	Melvin Bresee
Toy Train Operating Society Run	Stephen Waller
Children's Hospital of LA — Neo-Natal Run	Melvin Bresee
Fall Meet	Eric Fields/Fred Lack
Webb-Stutson Run	Roger Bacon/Christopher Mahony
Halloween Runs	Gary Baker/Eric Fields
Holiday Banquet	John Friend

### Special Committee

Travel Town Lewis Soibelman (Chair), Donald Frozina  
David Johnson, Daniel O'Brien

### Other Appointees

Air Compressor Maintenance	Bob Woodward
	Douglas Young
Art Directors	Gordon Sherwood
	David Johnson
Boiler Water System	Wilbur Wilhelm
Caretaker	John Smith
Cleanup and Recycling	James Baker
Database	Wilbur Dong
Electrician	John Smith
Engine Booster Editor	Donald Frozina
Engine Booster Mailing	Richard Jensen
Facility Film Rental	David Johnson
G Gauge Layout	Michael Houston
Key Master	Gary Baker
Landscaping	Lewis Soibelman
Librarian	Sam Calderwood
Locksmith	David Artinian
Miniature Buildings	Gary Baker
	Bonnie Kaufman
Plumbing Maintenance	Thomas Akins
Roster Ads	Leonard Evans
Roster Editor	Donald Frozina
Roster Mailing	Richard Jensen
Shed Manager	Steven Harris
Sprinkler Maintenance	Thomas Akins
Stationary Steam Plant	Bill Pascarella
Track Foremen, 4¾"/3½" Gauges	John DeRosa
	Christopher Mahony
Track Foremen, 7½" Gauge	John DePhillip, Jr.
	Douglas Young
Training Videos	Rob Simpson
	David Johnson
Webmaster	Peter Fuad

### General Meeting Highlights *(Continued from page 2)*

More than twenty suggestions were presented and recorded, each with the person's name who offered the idea. Each person, who was limited to a discussion time of two minutes, was asked to help in some manner with the proposal.

Those present engaged in a dynamic discussion, which all agreed was respectful and will lead to many new ideas being implemented.

After the "Roundhouse" discussion, President Don proceeded to detail the proceedings of the last Board meeting,

which included the presentation of the yearly budget. Please read "Splinters from the Board" for more complete details of the meeting.

After a short break, members were entertained with a railroad related video.

## For Sale

**Pair of 1½" scale cast boxcar ends** by Cannonball.  
\$130.00/OBO for pair. Contact Al Way, 805/452-1408.